

penguinpunk.net
access remotelyanywhere for clariion
revision 0.1

synopsis

The following is a simple document with screenshots providing step-by-step instructions for enabling access to the RemotelyAnywhere (RA) tool on the CLARiiON CX4.

Starting with FLARE Release 29 EMCRemote has been replaced with RA and a new security feature RA IP Address Filtering has been enabled on CX4 storage processors. RA Address Filtering does not allow any RA client connections on the SP management port until your RA client IP address is enabled on the SP.

table of figures

Figure 1 - CLARiiON Setup	3
Figure 2 - IP Filter Configuration for RemotelyAnywhere.....	3
Figure 3 - RemotelyAnywhere IP Filter Configuration - Confirmation	4
Figure 4 - RemotelyAnywhere IP Filter Configuration - Success	4
Figure 5 - RemotelyAnywhere - Windows Authentication	5
Figure 6 - RA - Advanced Options.....	6
Figure 7 - RA - Dashboard	6
Figure 8 - RA - Remote Control.....	7
Figure 9 - RA - LogMeIn Connection.....	7
Figure 10 - RA - CLARiiON Console	8
Figure 11 - RA - Ctrl-Alt-Del Button	8
Figure 12 - RA - Enter Credentials	9
Figure 13 - RA - CLARiiON Desktop	9
Figure 14 - RA - Microsoft Paint	10
Figure 15 - RA - Microsoft Paint	11
Figure 16 - RA - End Session.....	11
Figure 17 - RA - Session Ended.....	12

introduction

Providing access to RA on the CX4 is a fairly simple process. The purpose of this document is to provide visual guidance on the process. It is extremely important that you keep in mind that RA should only be used at the direction of EMC Support personnel. If you muck about with RA and break something on your CLARiiON don't come crying to me.

process

In order to access the RemotelyAnywhere feature of Release 29 CLARiiONs, you need to set some RemotelyAnywhere access restrictions. This can be done via the CLARiiON setup page at <http://<IP address>/setup>. Obviously, you'll need a valid login on the array to get in and do this.

Set client access to CLARiiON remote administration tool RemotelyAnywhere using IP Address Filtering.

Set RemotelyAnywhere Access Restrictions

Figure 1 - CLARiiON Setup

IP Filter Configuration for RemotelyAnywhere

IP Filter Configuration for RemotelyAnywhere

Warning, values entered for Filters should be static IP addresses (not dynamic addresses obtained using DHCP). In addition, temporary IPv6 addresses are not recommended due to their

Filters that apply to the connected storage system only

<input type="text"/>	<input type="text"/>	<input type="text"/>
<input type="text"/>	<input type="text"/>	<input type="text"/>
<input type="text"/>	<input type="text"/>	<input type="text"/>
<input type="text"/>	<input type="text"/>	<input type="text"/>

Filters that apply to all storage systems in the domain

<input type="text" value="10.101.100.175"/>	<input type="text" value="255.255.255.16"/>	<input type="text"/>
<input type="text"/>	<input type="text"/>	<input type="text"/>
<input type="text"/>	<input type="text"/>	<input type="text"/>
<input type="text"/>	<input type="text"/>	<input type="text"/>

Figure 2 - IP Filter Configuration for RemotelyAnywhere

You can add IP addresses to filters that apply either to the local storage systems or to all systems in the storage domain. This is useful if you have different administrators working on arrays in the same domain. In the above example, I've added IP addresses to the all systems IP filter.

RemotelyAnywhere IP Filter Configuration - Confirmation

WARNING: You are about to alter the trusted client access list.

Apply Settings

Back

Figure 3 - RemotelyAnywhere IP Filter Configuration - Confirmation

As this is a CLARiiON, you get the opportunity to confirm before you apply the settings to the filter.

RemotelyAnywhere IP Filter Configuration - Apply

RemotelyAnywhere IP Filter request was successful.

Back

Figure 4 - RemotelyAnywhere IP Filter Configuration - Success

Once you've configured the IP Filter, you can access RA by going to <http://<IPaddress>:9519>, where <IPaddress> is the IP of one of the SPs on the CLARiiON you'd like to login to.



The screenshot shows the RemotelyAnywhere login interface. At the top center is the RemotelyAnywhere logo. Below it is a section titled "Windows Authentication" with a light blue border. Inside this section, the text "Please enter your Windows username and password." is displayed. There are three input fields: "User name" (a text box), "Password" (a text box with a small eye icon for visibility), and "Log on to" (a dropdown menu currently showing "Local Host"). To the right of these fields is a blue "Login" button. Below the "Windows Authentication" section, a message states "The target PC keyboard and mouse have been inactive for 6 days." At the bottom center of the page is a button labeled "Show advanced options >>".



Figure 5 - RemotelyAnywhere - Windows Authentication

Clicking on "Show Advanced Options" will, obviously, show some advanced options. These are useful if you have a rubbish web browser or connection, or want to go straight into the remote control or file transfer menus.

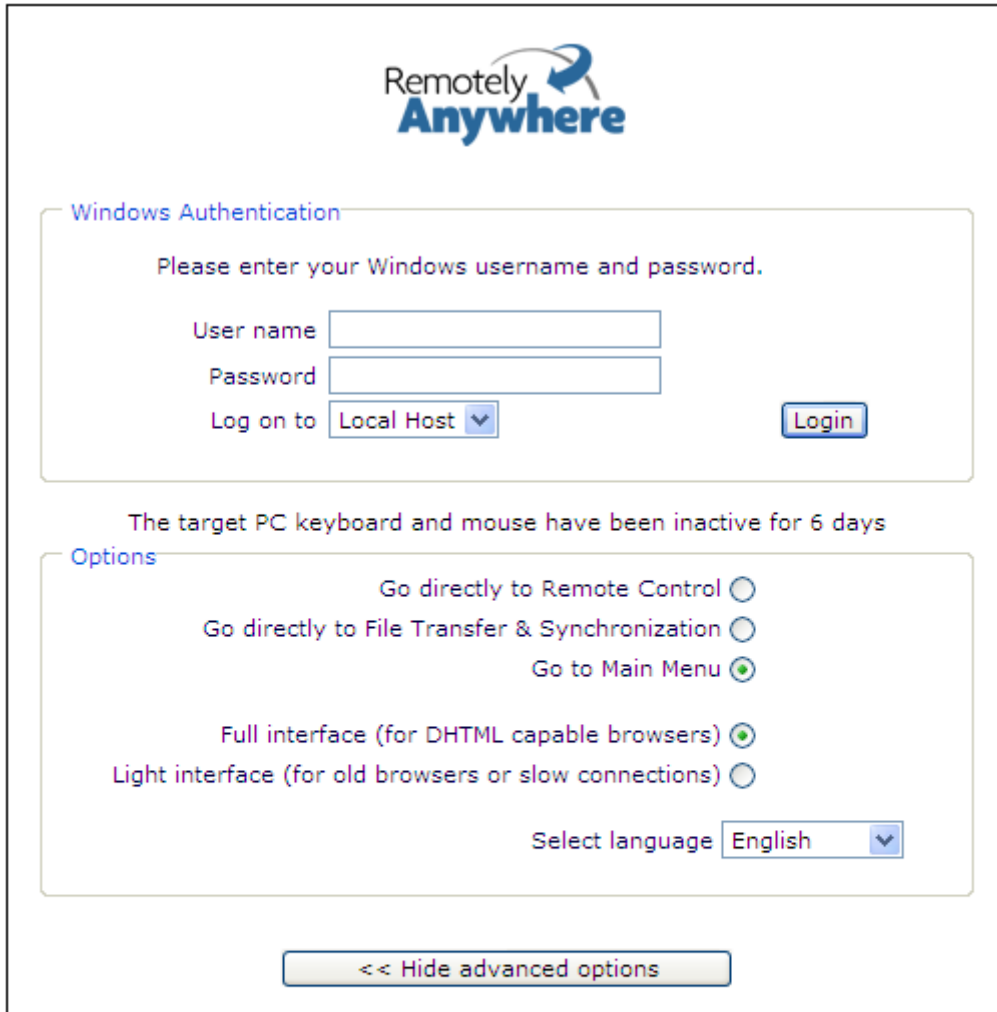


Figure 6 - RA - Advanced Options

If you think I'm going to publish the username and password you are sadly mistaken.

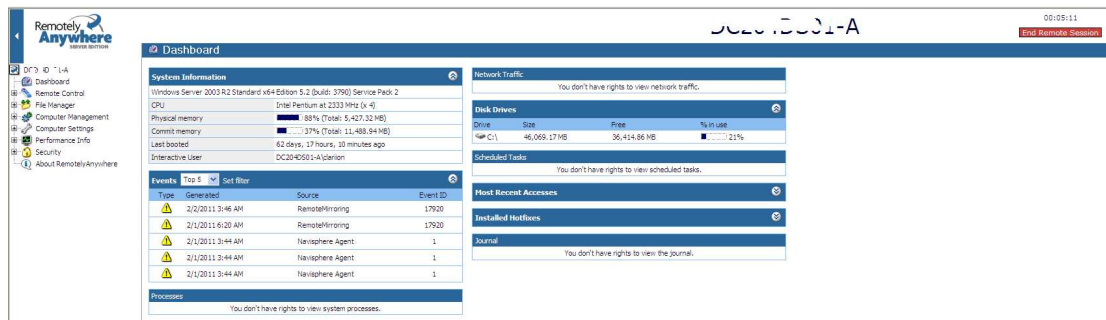


Figure 7 - RA - Dashboard

Once you've logged in you're presented with the RA Dashboard, which provides a basic

overview of the system status.

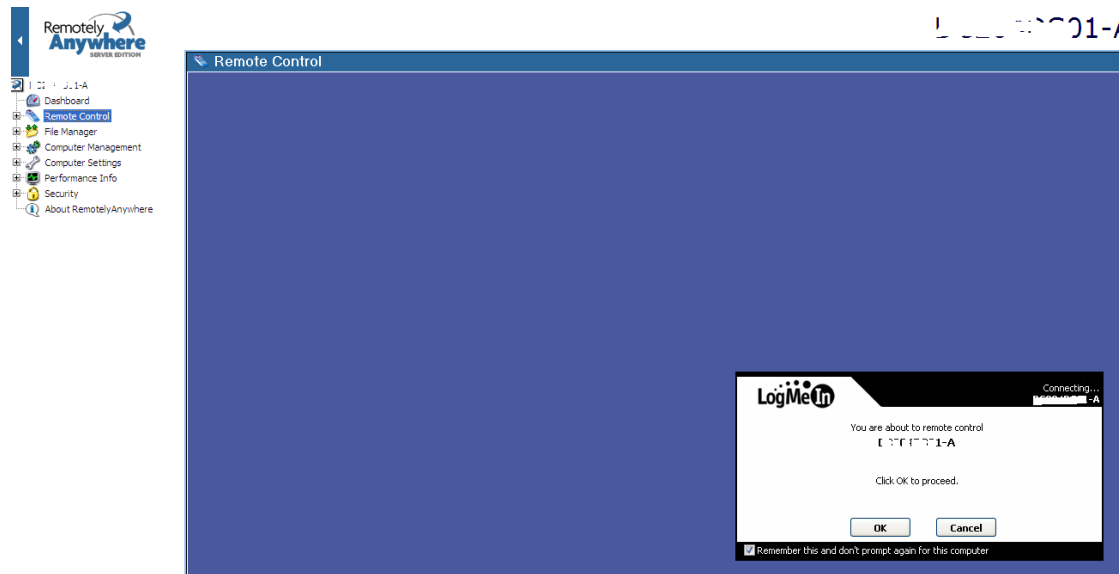


Figure 8 - RA - Remote Control

Click on the Remote Control menu to the left of the main window, and a LogMeIn splash screen will pop up and confirm that that is what you really want to be doing.



Figure 9 - RA - LogMeIn Connection

Once you have confirmed that this is what you want to do, LogMeIn will connect you to the host. You will then be presented with the console of Windows Server 2003 R2 Standard x64 Edition.

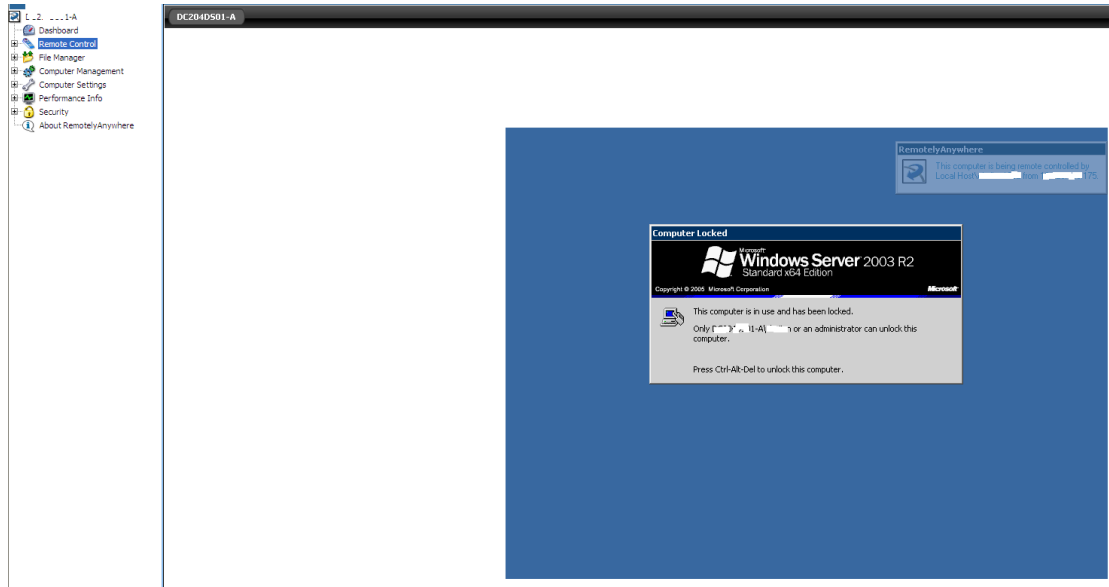


Figure 10 - RA - CLARiON Console

On the right-hand side of the screen is a little icon representing Ctrl-Alt-Del. You'll need to click on that in order to login as the host is locked.

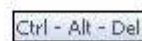


Figure 11 - RA - Ctrl-Alt-Del Button

You'll then have the opportunity to enter the appropriate username and password.

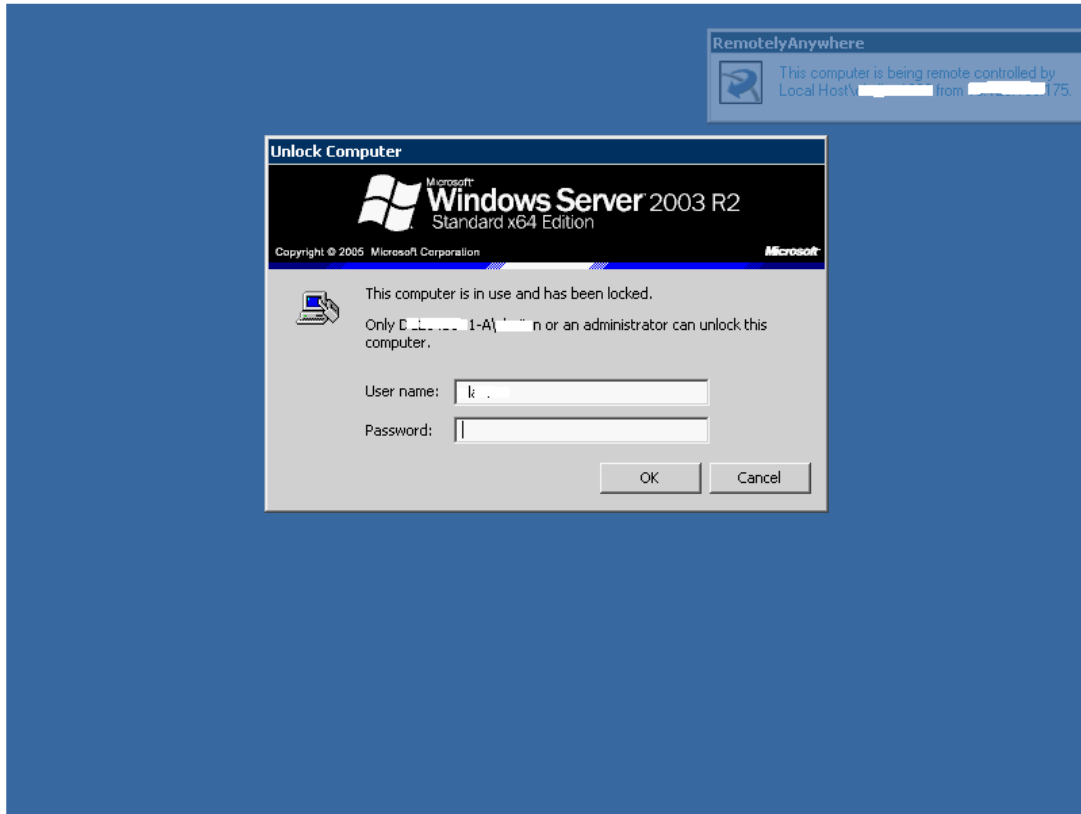


Figure 12 - RA - Enter Credentials

Once you've entered the correct credentials you'll have access to the desktop.

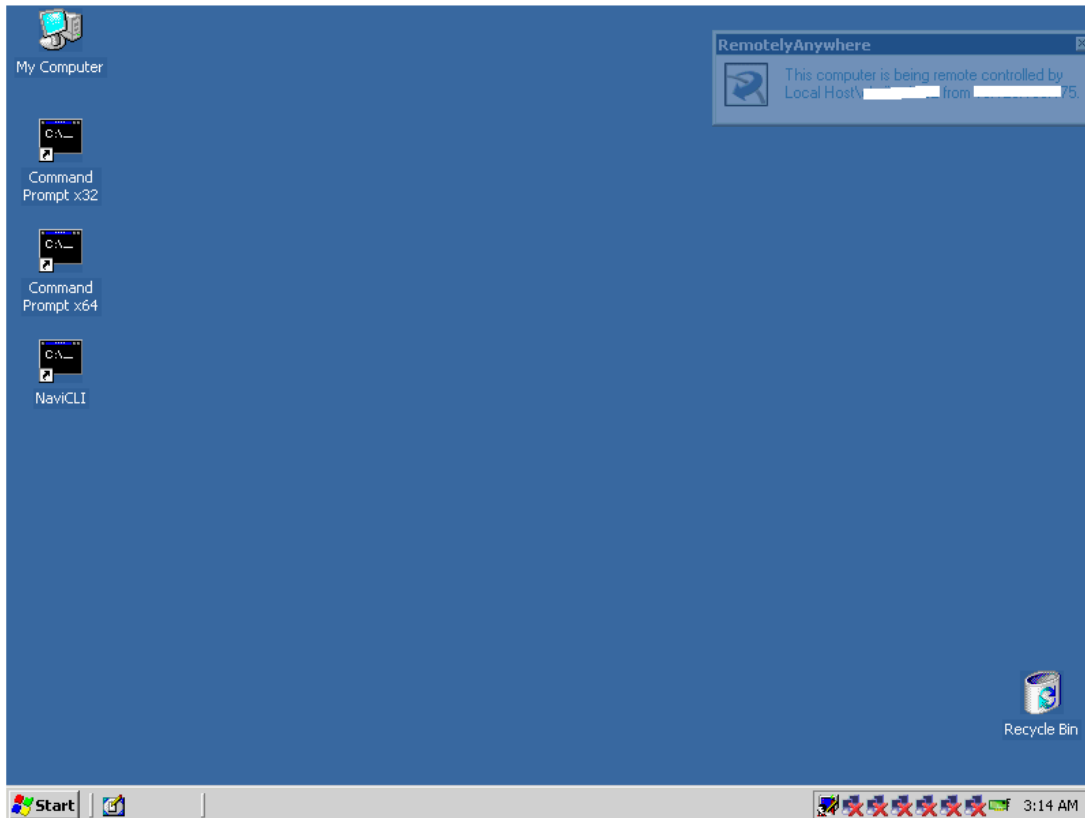


Figure 13 - RA - CLARiiON Desktop

So the first thing I like to do is fire up Microsoft Paint. Mainly because it's there and because I can.

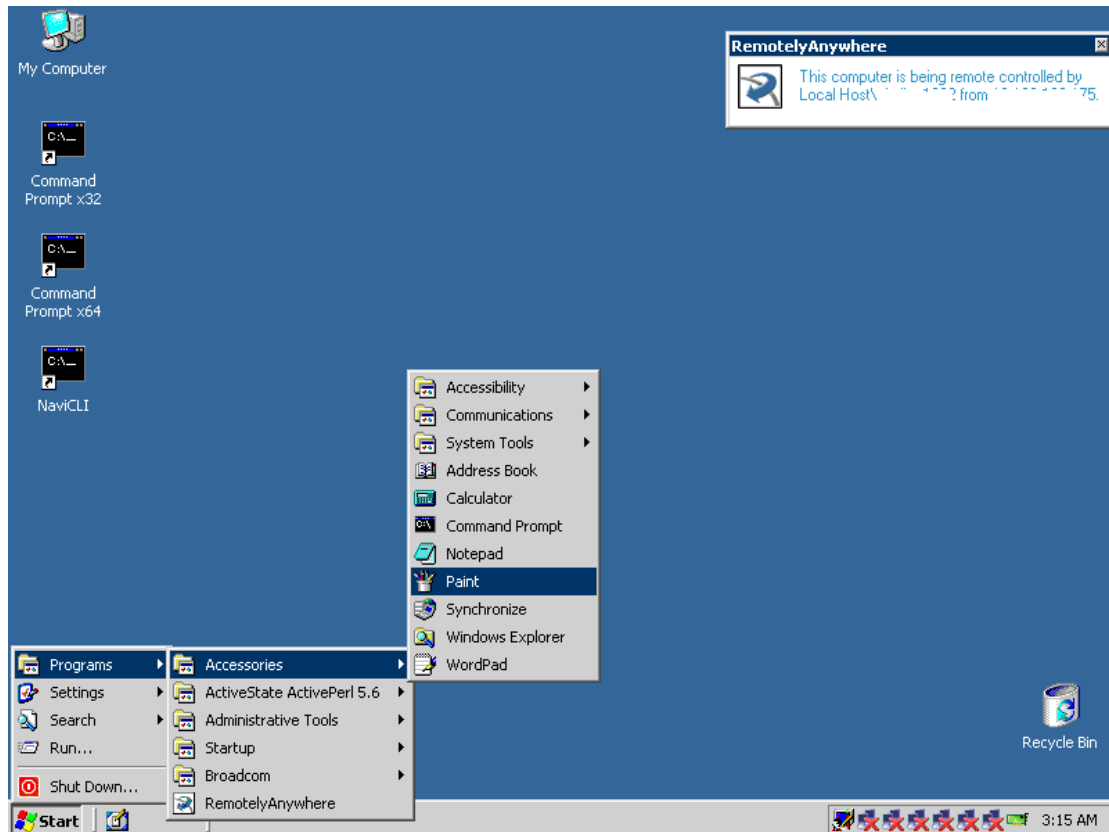


Figure 14 - RA - Microsoft Paint

Go on, draw a picture. You know you want to.

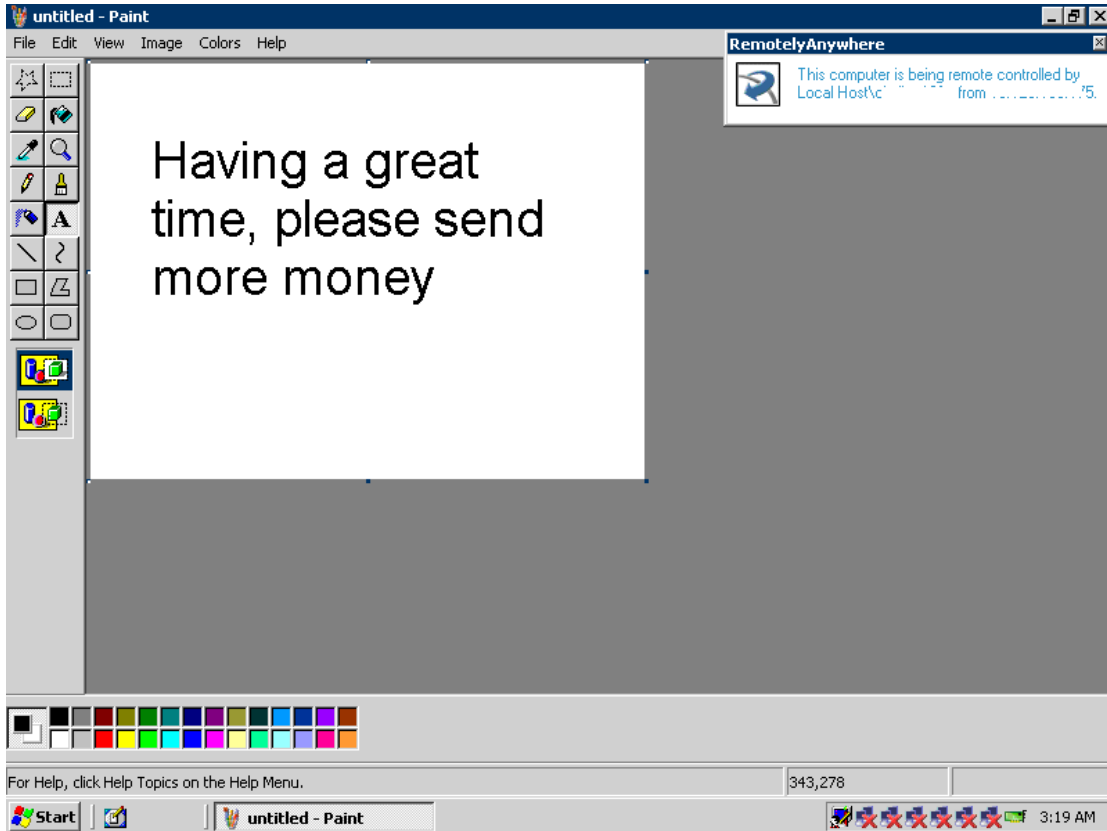


Figure 15 - RA - Microsoft Paint

Once you're done messing about, ensure that you've closed any applications that you've opened and lock the host again. Leaving crap running that shouldn't be running may lead to a DU (Data Unavailable) or DL (Data Loss) Event. So, don't be silly now. Once you've locked the host click on End Session to end the RA session.



Figure 16 - RA - End Session

And once you've ended the session you'll be back at RA Windows Authentication dialog.

Remotely Anywhere
SERVER EDITION

Windows Authentication

Please enter your Windows username and password.

User name

Password

Log on to

The target PC keyboard and mouse have been inactive for 6 days

Options

Go directly to Remote Control

Go directly to File Transfer & Synchronization

Go to Main Menu

Full interface (for DHTML capable browsers)

Light interface (for old browsers or slow connections)

Select language

<< Hide advanced options



Figure 17 - RA - Session Ended

And there you have it.