

penguinpunk.net
remove array from clariion domain
revision 0.1

synopsis

The following is a simple document with screenshots providing step-by-step instructions for removing a CLARiiON array from a Navisphere / Unisphere management domain after it has been powered off.

table of figures

Figure 1 – Tools – Portal Configuration.....	3
Figure 2 – Portal Configuration.....	4
Figure 3 – Remove Portal Confirmation	4
Figure 4 – Portal Configuration.....	5
Figure 5 – Configure Domain	5
Figure 6 – Configure Domain – Selected Systems	6
Figure 7 – Configure Domain – Available Systems.....	6
Figure 8 – Configure Domain - Confirmation.....	7
Figure 9 - Configure Domain - Confirmation	7
Figure 10 - Configure Domain - Confirmation	8
Figure 11 - Configure Domain - Success	8
Figure 12 - Unisphere Dashboard	8

introduction

The problem is as follows. We have a Navisphere / Unisphere management domain with a mix of CX4-960s, CX3-20s and, until recently, a CX700. Both of the CX4s run FLARE 30, with the CX and CX3s running FLARE 26. We decommissioned the CX700 some time ago, and finally had EMC in to perform a secure erasure for us. We didn't think to remove the array from the Navisphere domain prior to this, however. So for whatever reason there was no way I could remove this legacy array via the Unisphere interface. I didn't really want to destroy the domain security information as we have a number of accounts running scripts and so forth and so I had to come up with another way.

process

I had the bright idea that maybe this could be achieved by logging on to the Navisphere interface of one of the arrays running FLARE 26. But when I went to remove the legacy system it said it was configured as a portal. Crazy stuff, because we didn't have any arrays that needed portal support. But then again, this CX700 had been around for a while and a few people had had a poke at it. Including me. So, I had to first remove it from the Portal Configuration in Navisphere.

To do this, go to Tools, Portal Configuration.

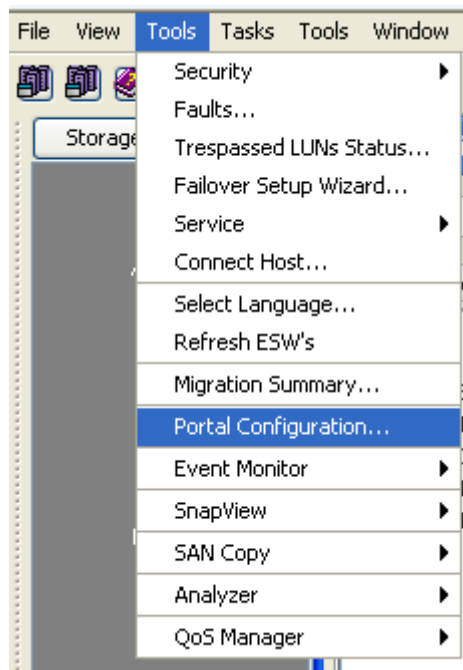


Figure 1 – Tools – Portal Configuration

You'll be presented with a list of configured Portals that the array knows about.

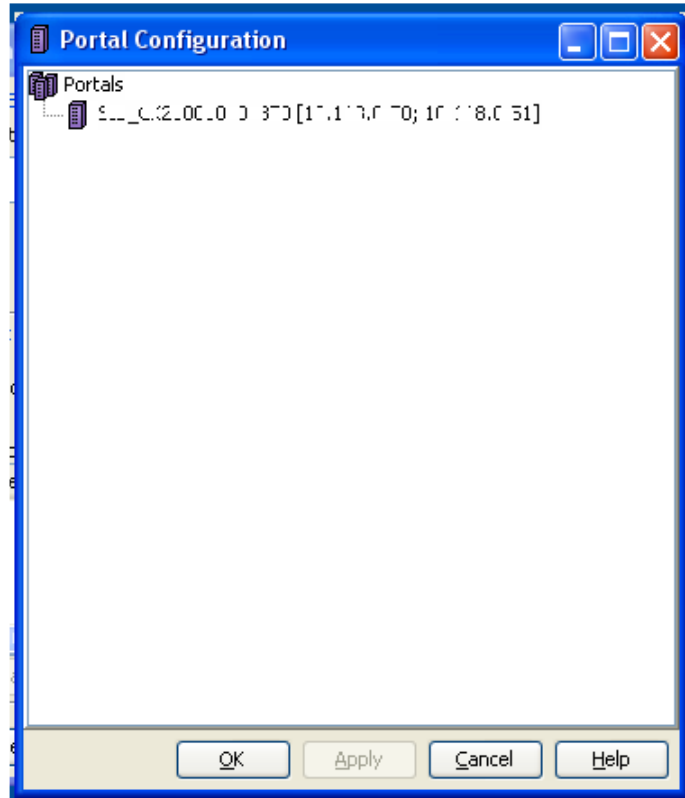


Figure 2 – Portal Configuration

Right-click on the array and select Remove Portal. You will then be prompted for confirmation.

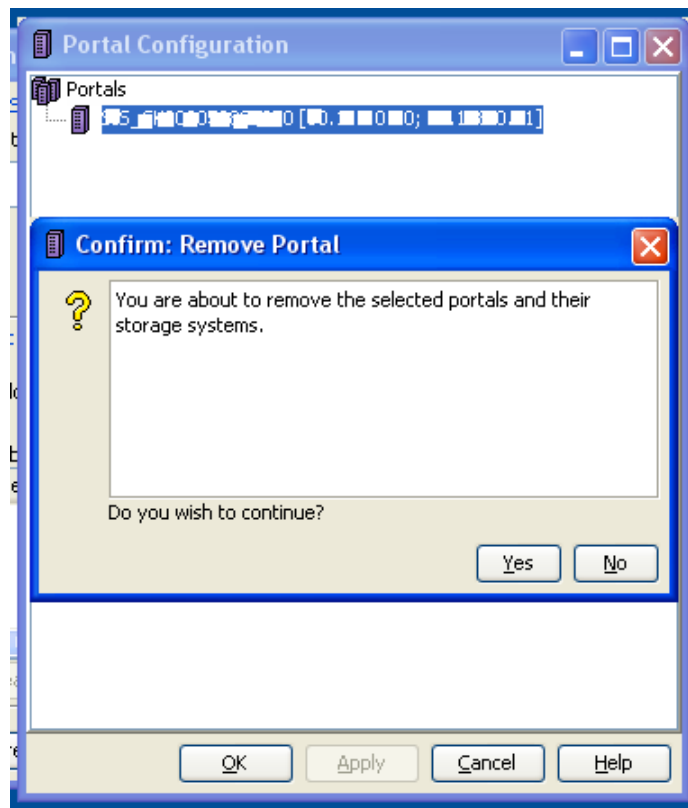


Figure 3 – Remove Portal Confirmation

And then there were none.

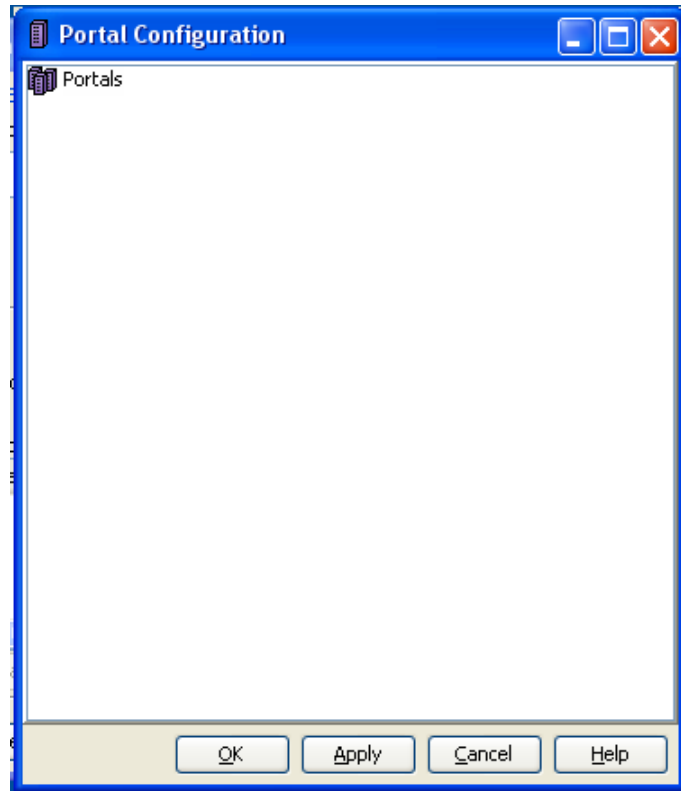


Figure 4 – Portal Configuration

Now, go to File, Set Up Domain, Configure Domain.

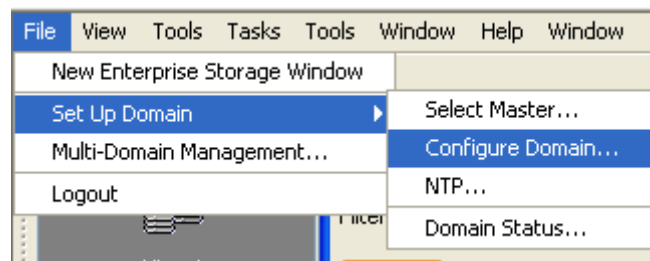


Figure 5 – Configure Domain

You'll see a list of systems that are currently listed as members of the domain.

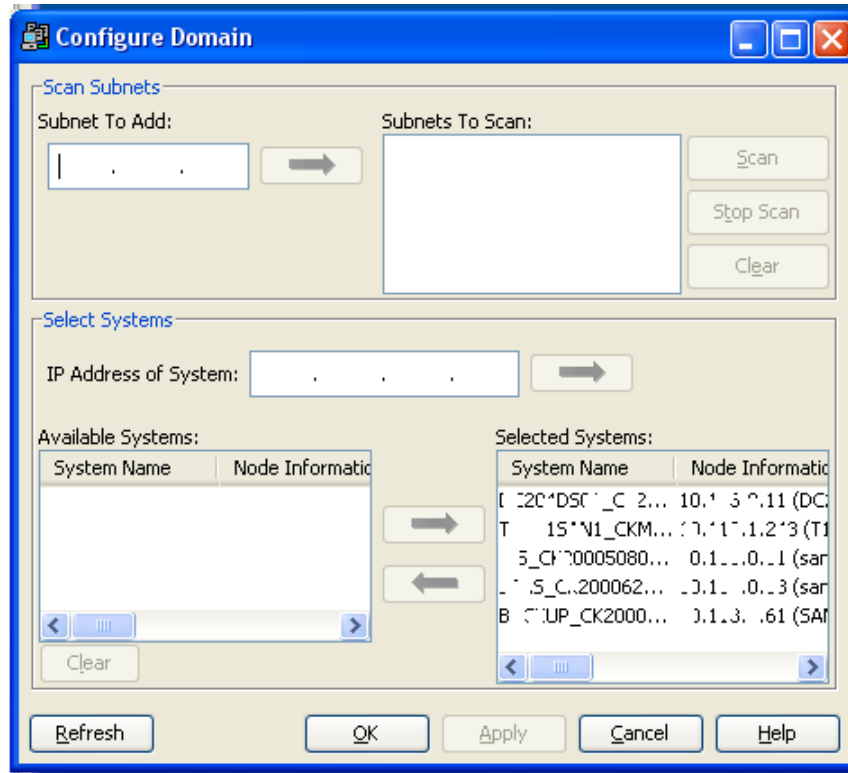


Figure 6 – Configure Domain – Selected Systems

Select the array you wish to remove and click the arrow in the left direction to move it to the Available Systems section.

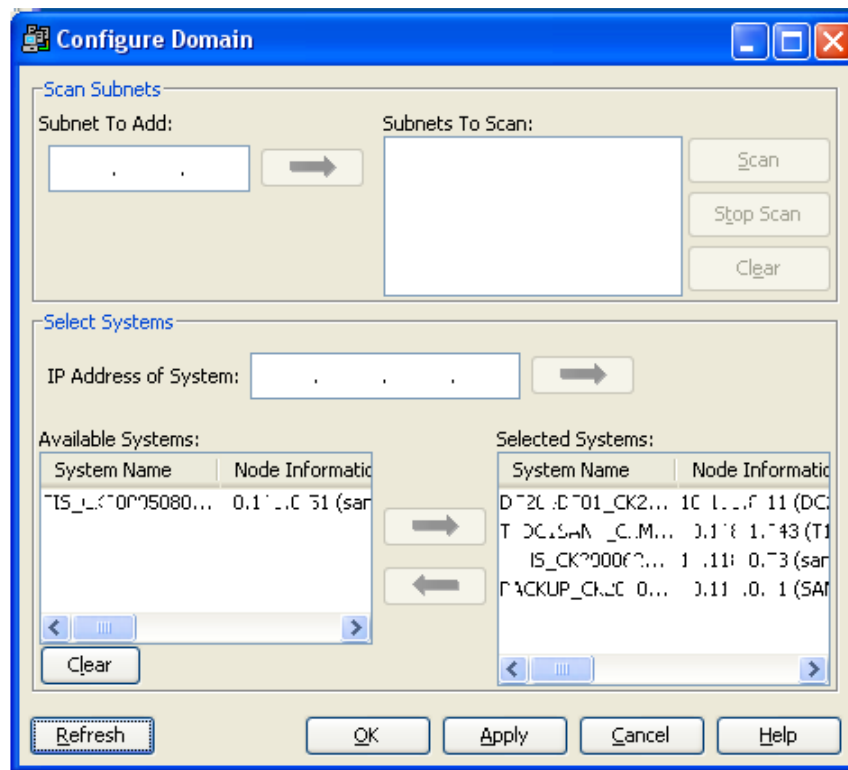


Figure 7 – Configure Domain – Available Systems

Click OK. You'll be presented with a Confirmation dialogue checking that you really want to remove the system from the domain. Click Yes to confirm that you really want to do this.

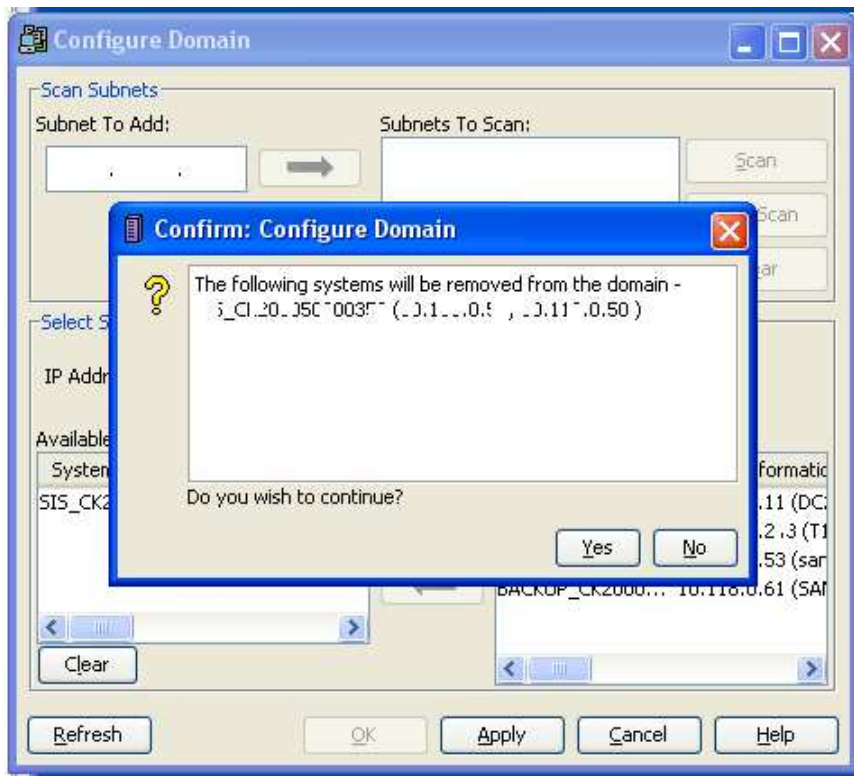


Figure 8 – Configure Domain - Confirmation

Even though you really want to, you'll get another warning. Just in case.

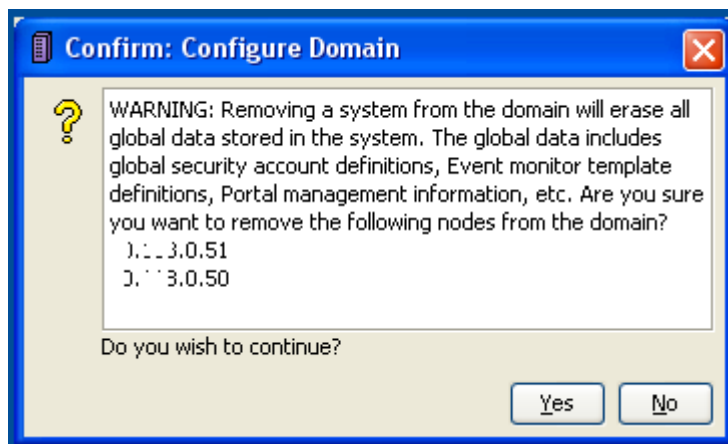


Figure 9 - Configure Domain - Confirmation

How about another warning? Because this is obviously heavy stuff.

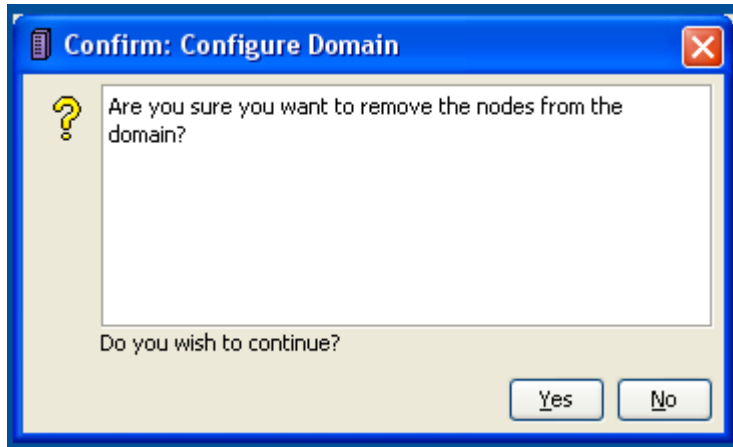


Figure 10 - Configure Domain - Confirmation

You will then be greeted with a pleasant message suggesting that it's all good.

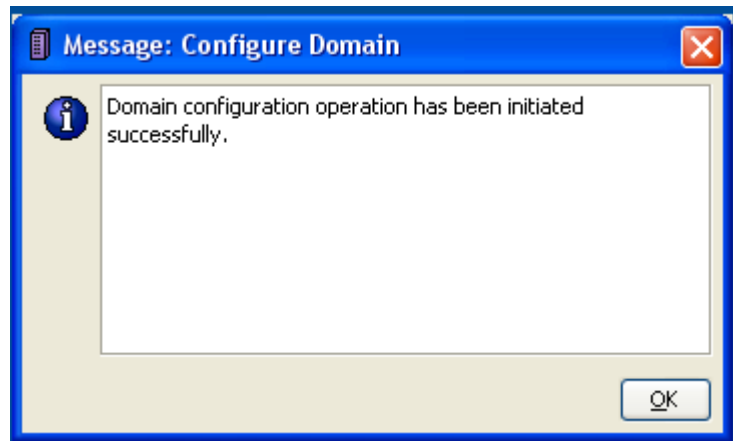


Figure 11 - Configure Domain - Success

If you log back into the domain master with Unisphere, the errant system will be gone from the dashboard. Of course, this screenshot would have more impact if I'd taken a before shot. So you'll just have to take my word for it.

Systems by Severity			
System	Domain	Status	Model
...DC S...C...0000...j...	Local	Error (1)	CX4-960
LC 0...JS01 CX_000...60...	Local	Warning (1)	CX4-960
IC 1...C...2000...2100...43	Local	OK	CX3-20
_A...P...120...07...100...10	Local	OK	CX3-20f

Figure 12 - Unisphere Dashboard