

**penguinpunk.net**  
**joining an ESXi host to an active directory domain**  
**revision 0.1**

### **synopsis**

The following is a simple document providing visual guidance on the process required to join an ESXi 5 host to a Microsoft Active Directory domain. It is intended that this document be read in conjunction with supporting documentation from VMware and elsewhere.

**table of contents**

introduction ..... 3  
process ..... 4

**table of figures**

Figure 1 - Configuration - Authentication Services ..... 4  
Figure 2 - Directory Services Configuration ..... 4  
Figure 3 - Select Directory Service Type..... 5  
Figure 4 - Domain Settings ..... 5  
Figure 5 - Domain Credentials..... 6  
Figure 6 - Join Domain ..... 6  
Figure 7 - Success..... 7

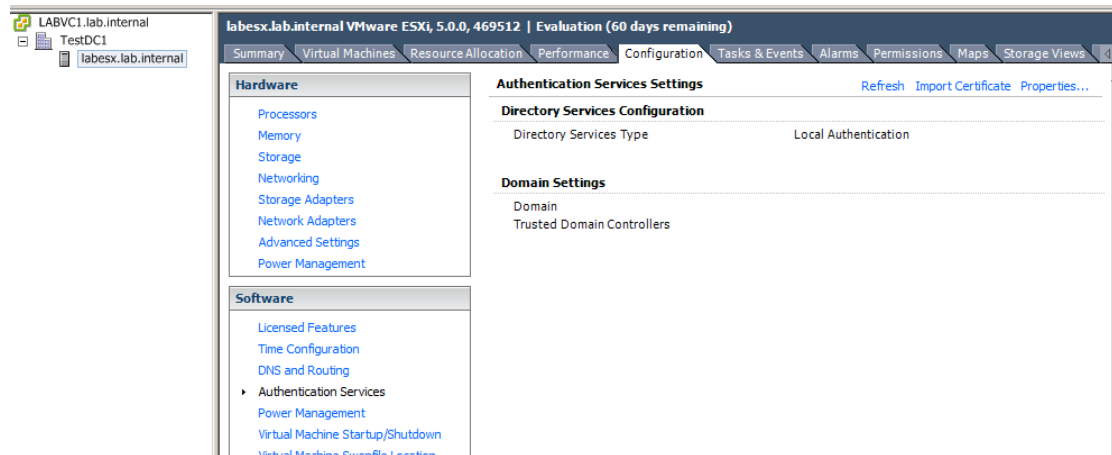
## **introduction**

The following is a simple document providing visual guidance on the process required to join an ESXi 5 host to a Microsoft Active Directory domain. It is intended that this document be read in conjunction with supporting documentation from VMware and elsewhere.

The primary reason for joining an ESXi host to a domain is to administer user privileges from a centralised directory, namely Active Directory.

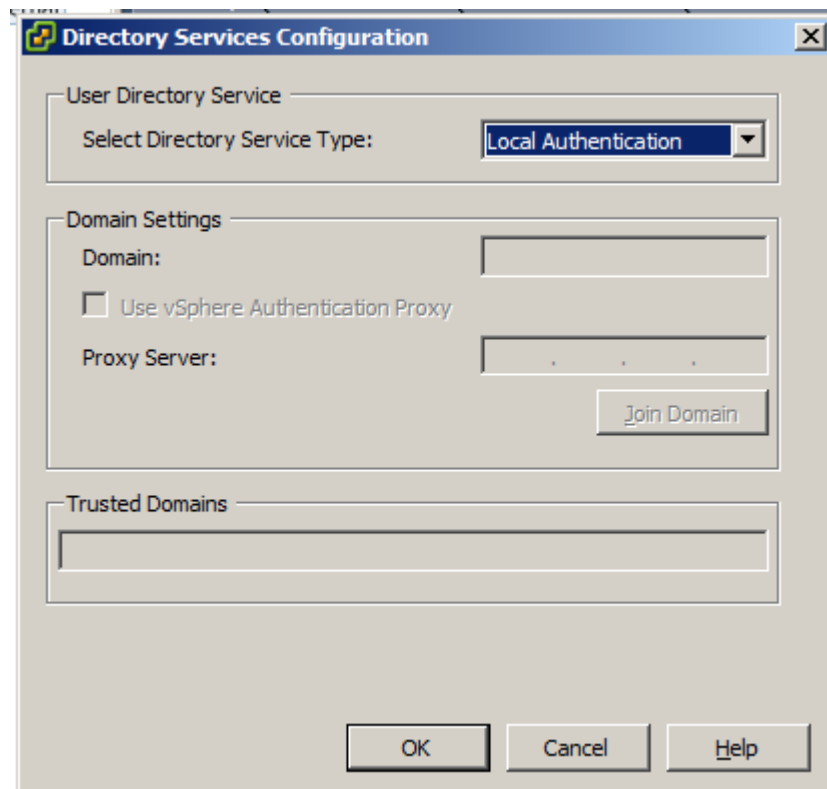
## process

The first step is to select the Configuration tab on the ESXi host. Click on Authentication Services.



**Figure 1 - Configuration - Authentication Services**

Note that the Directory Service Type, by default, is set to Local Authentication.



**Figure 2 - Directory Services Configuration**

From the drop-down box, select Active Directory. Once this is selected, the Domain Settings can then be modified.

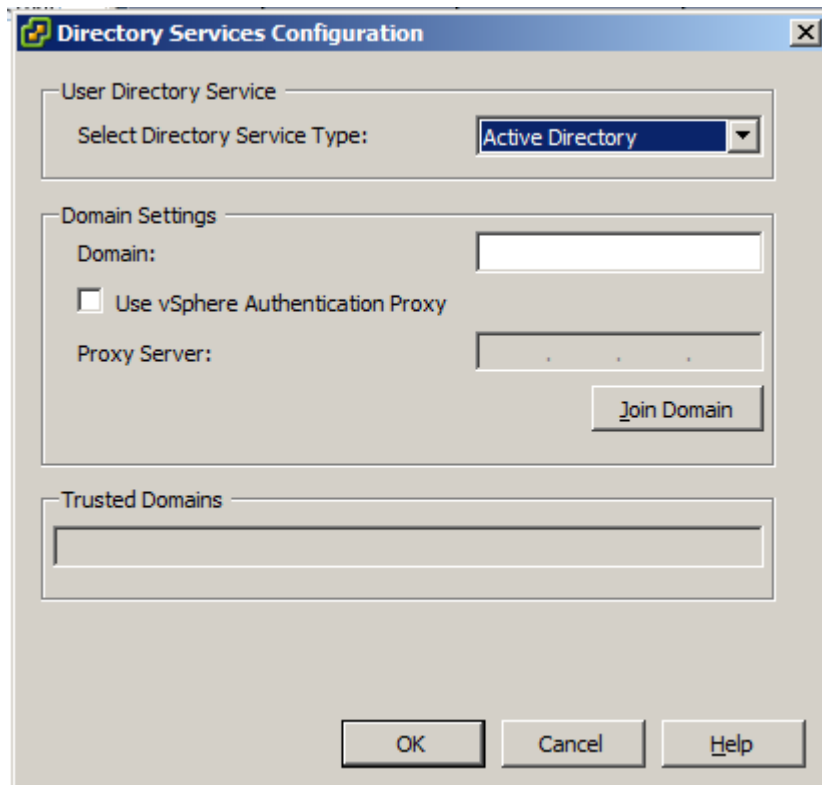


Figure 3 - Select Directory Service Type

Enter the settings appropriate to the Domain you wish to join. Note that you should be joining the host to the domain that contains the users you wish to grant privileges to. Once you've entered the appropriate domain settings, click on Join Domain.

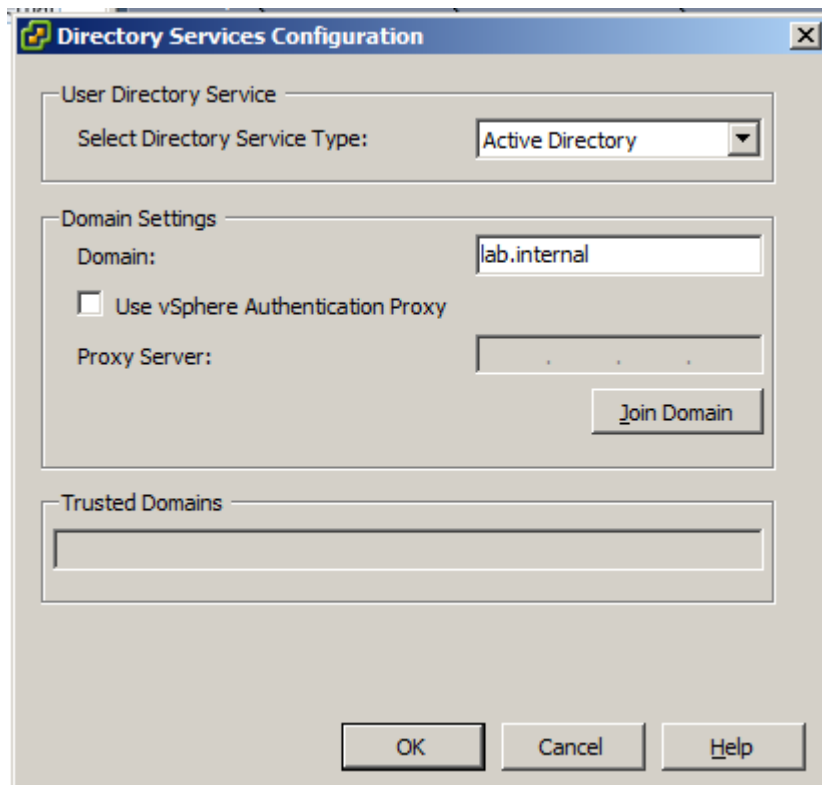


Figure 4 - Domain Settings

At this point you'll be prompted to provide domain credentials with sufficient privileges to join a computer to the domain.

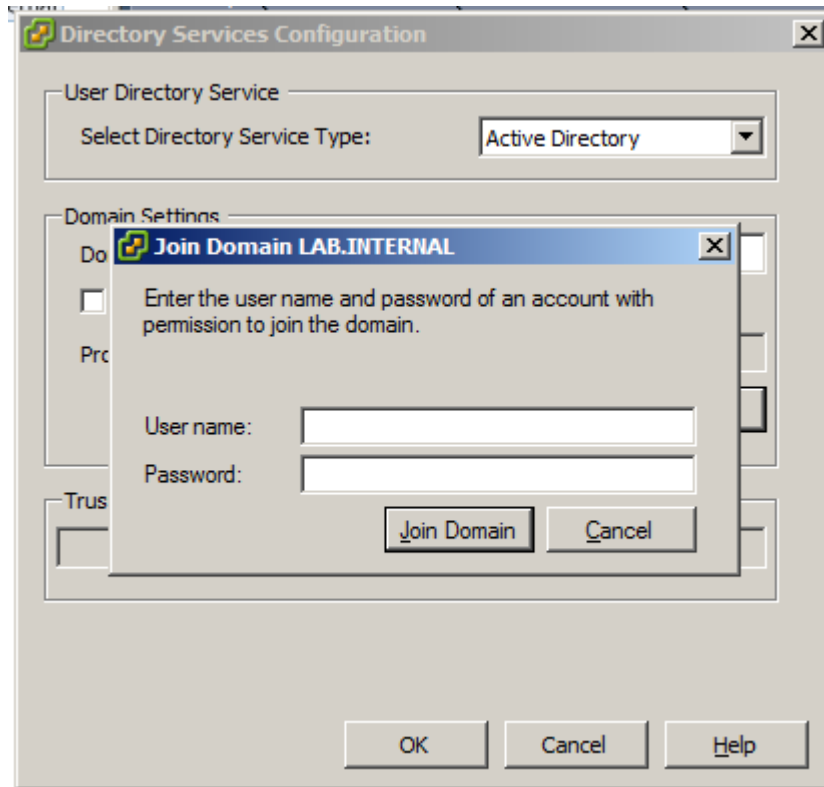


Figure 5 - Domain Credentials

Like all bad test environments, I'm using the default administrator account.

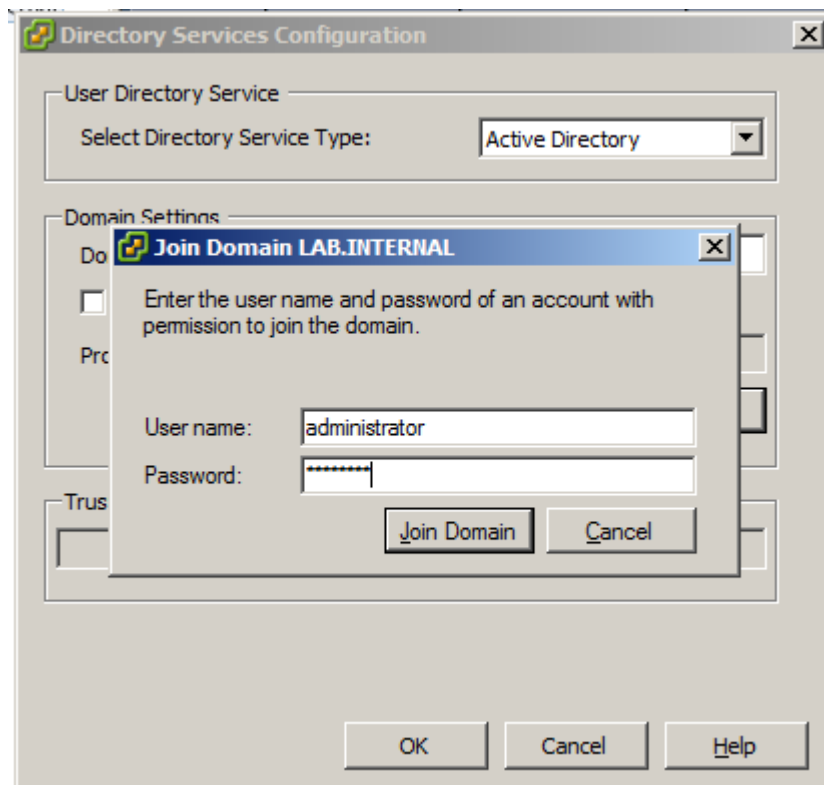
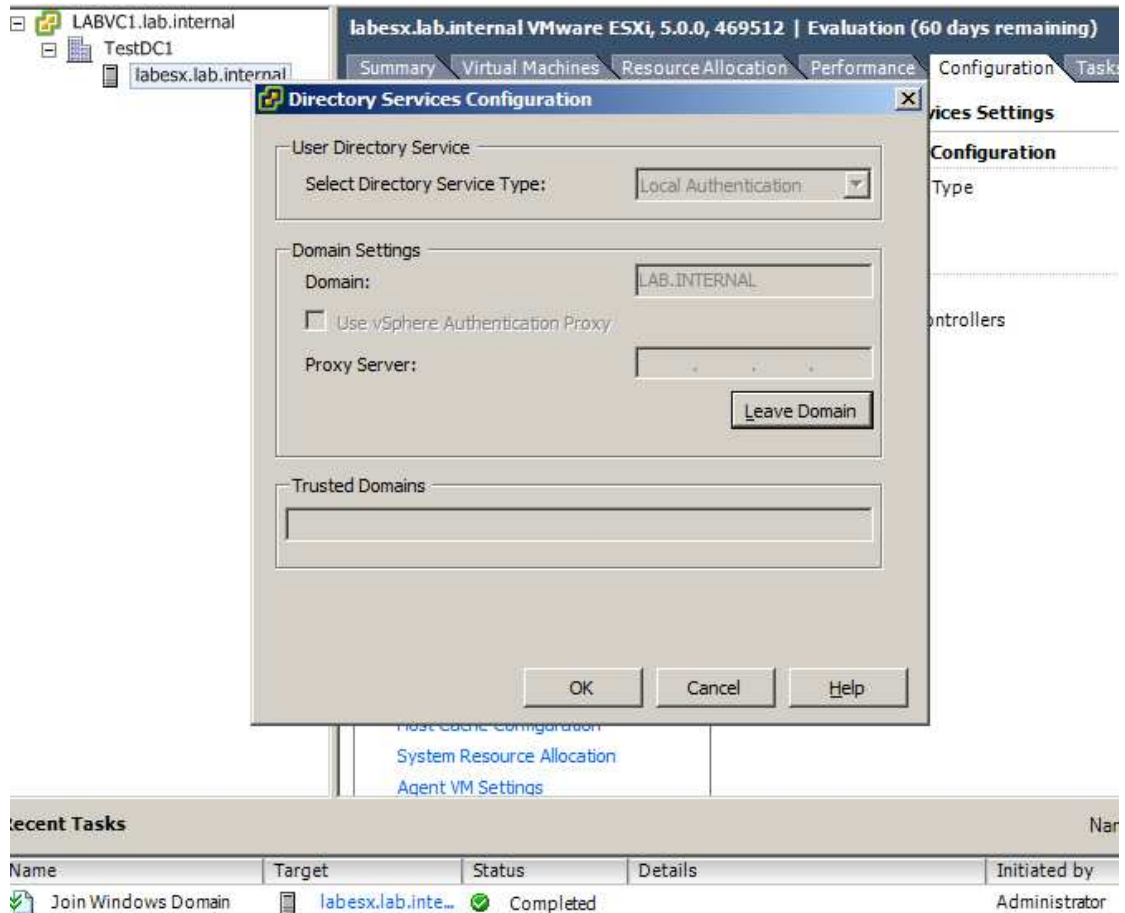


Figure 6 - Join Domain

If all goes well, the task will complete successfully and your host will be joined to the Active Directory domain.



**Figure 7 - Success**

At this point you can start granting permissions to various groups, depending on what functions you need them to be able to perform.