

**penguinpunk.net**  
**emc powerpath/ve license rehosting**  
**revision 0.1**

## **synopsis**

The following is a simple document providing visual guidance on the process required to rehost emc powerpath/ve licenses on powerlink.

**table of contents**

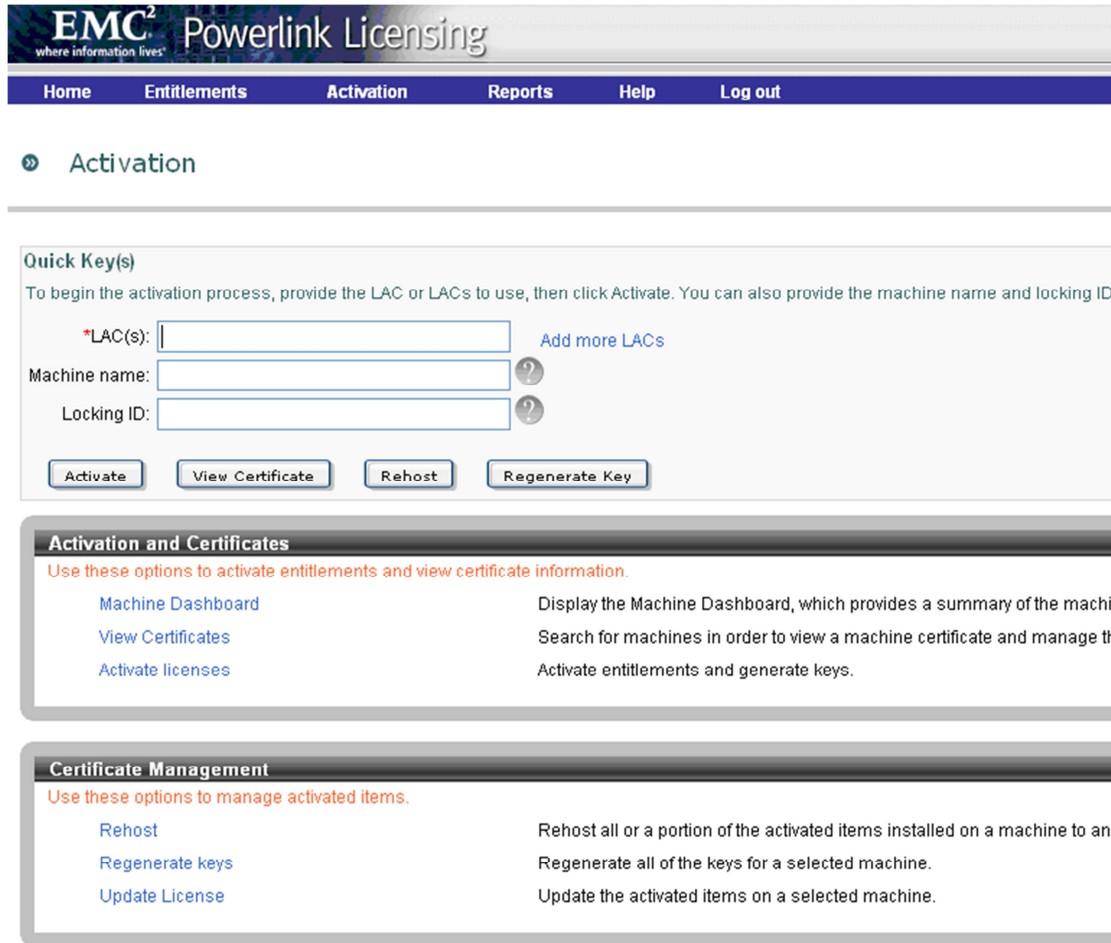
process ..... 3

**table of figures**

Figure 1 – EMC Powerlink Licensing Dashboard..... 3  
Figure 2 – Certificate Search..... 4  
Figure 3 – Certificate Search..... 4  
Figure 4 – Certificate Search Results..... 5  
Figure 5 – View Summary ..... 5  
Figure 6 – Edit Machine Information..... 5  
Figure 7 – New Host..... 6  
Figure 8 – Same Machine Rehost Error ..... 6  
Figure 9 – Edit Machine – Machine Name ..... 6  
Figure 10 – Success..... 6  
Figure 11 – Machine Status Change Error ..... 7  
Figure 12 – Transfer Host..... 7  
Figure 13 – New Host – Modify Quantity..... 8

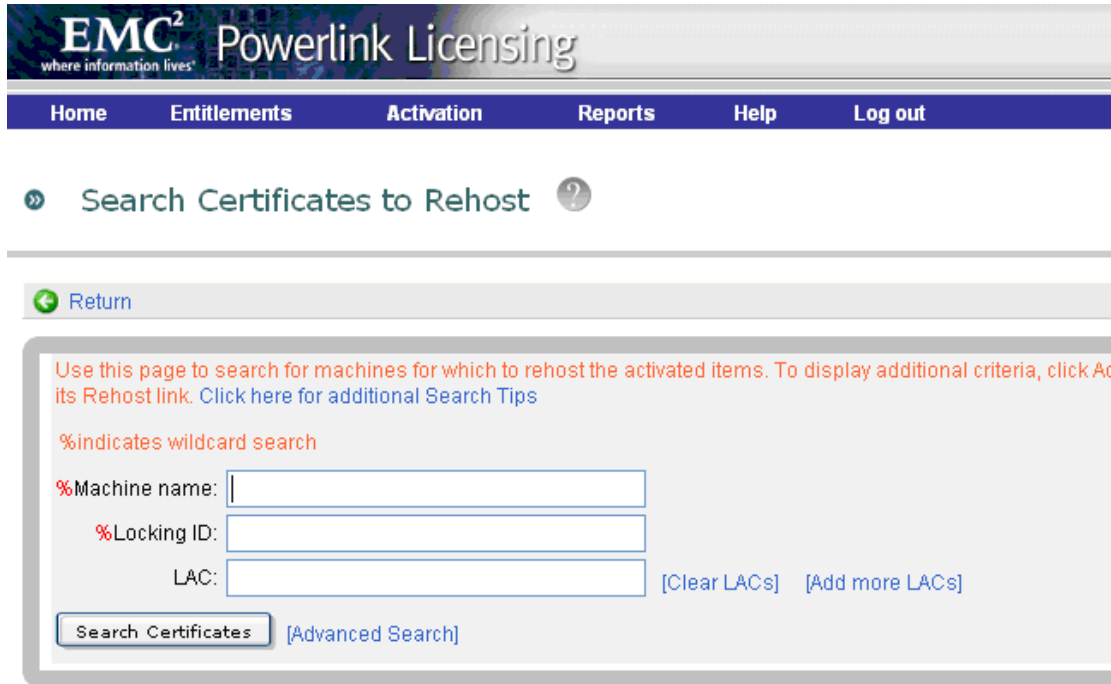
**process**

The License Server (ELM) used to deliver licences to PowerPath/VE hosts has had an IP address changed. License keys are generated in the license portal using the IP address of the ELM. The licenses need to be rehosted on another machine.



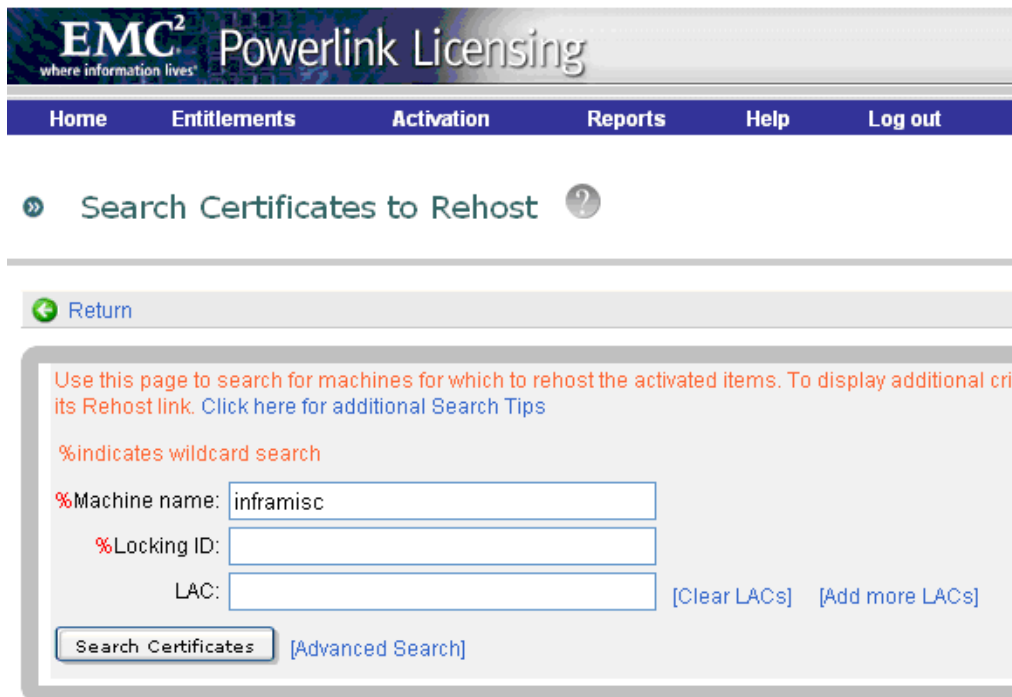
**Figure 1 – EMC Powerlink Licensing Dashboard**

First search for the ELM server that you wish to rehost licenses from.



**Figure 2 – Certificate Search**

The most enjoyable part of using Cisco software is their choice of stock photos.



**Figure 3 – Certificate Search**

It will then display the details of the host. Note the Locking IDs are the IP address and hostname.



Figure 4 – Certificate Search Results

You can view a summary of the host to display the activated products.

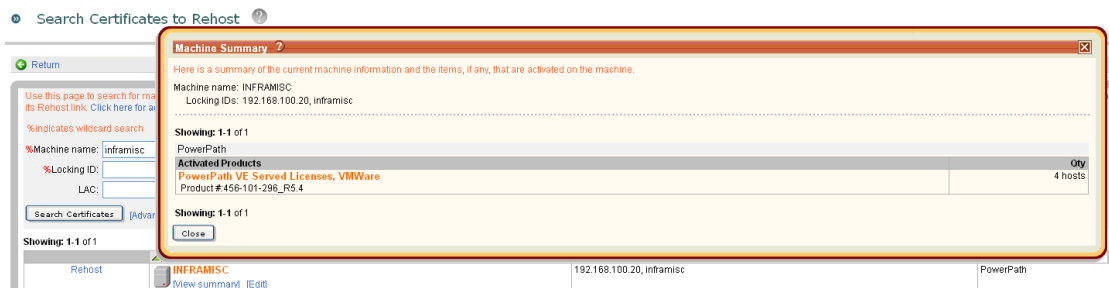


Figure 5 – View Summary

Once you click on Edit you can rename the host or change its status.

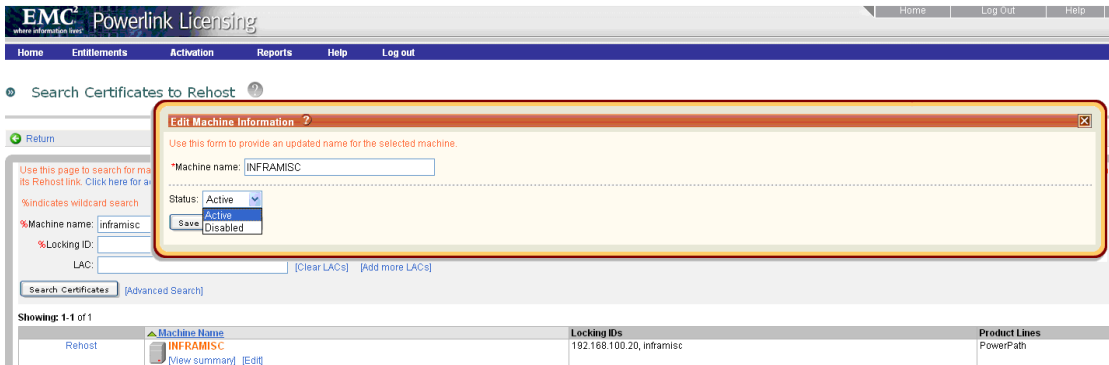


Figure 6 – Edit Machine Information

Clicking on Rehost will prompt for a new host to move the licences to.

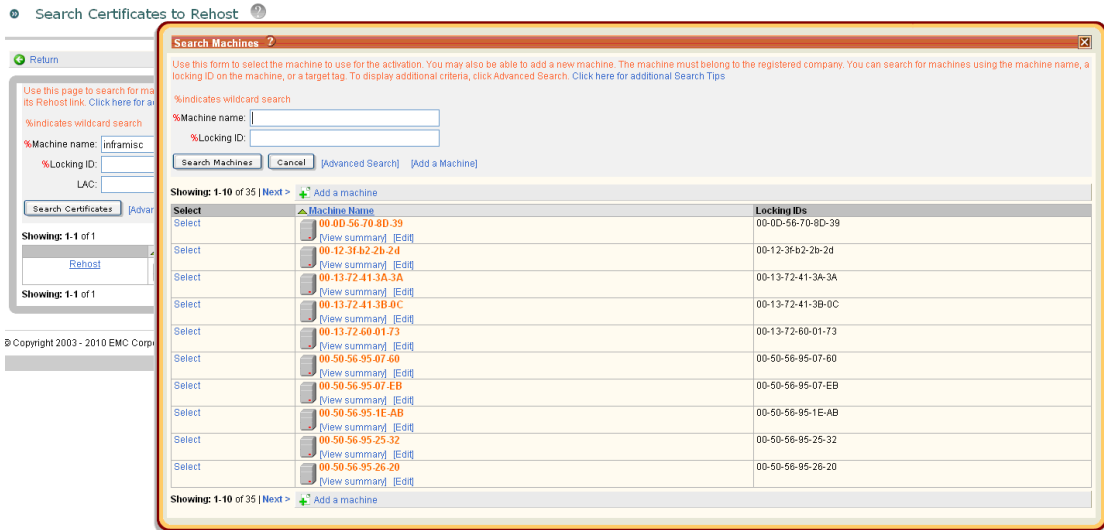


Figure 7 – New Host

You cannot rehost to the same host.

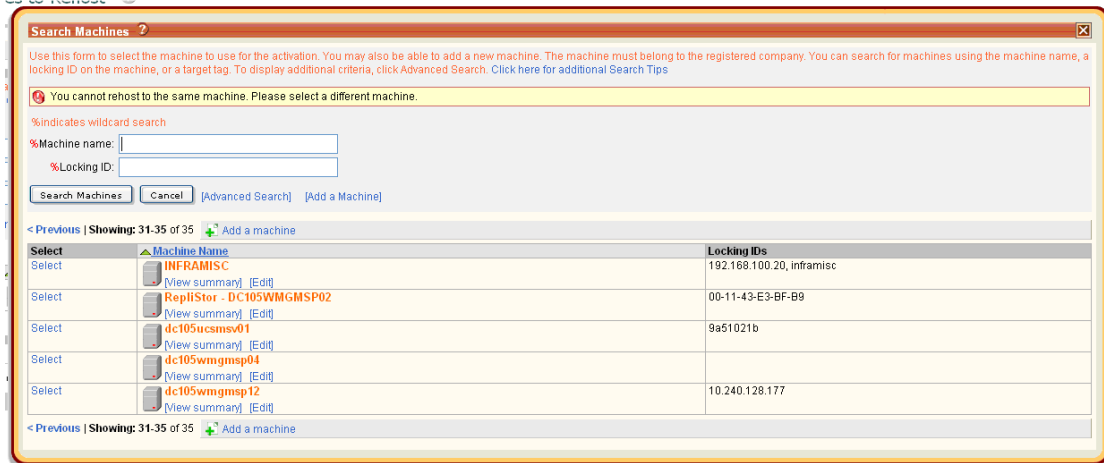


Figure 8 – Same Machine Rehost Error

You can rename a host.

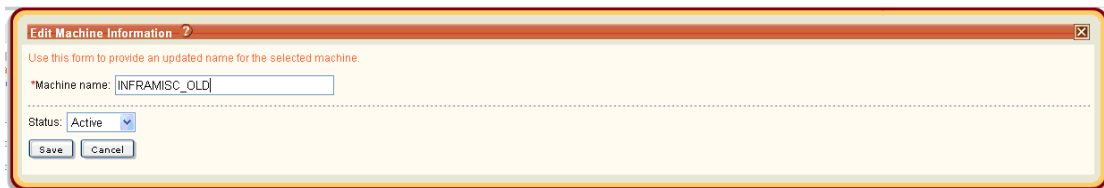


Figure 9 – Edit Machine – Machine Name

You can attempt to change the status of the host.

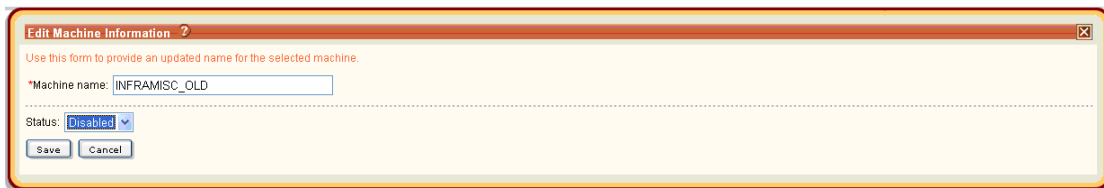
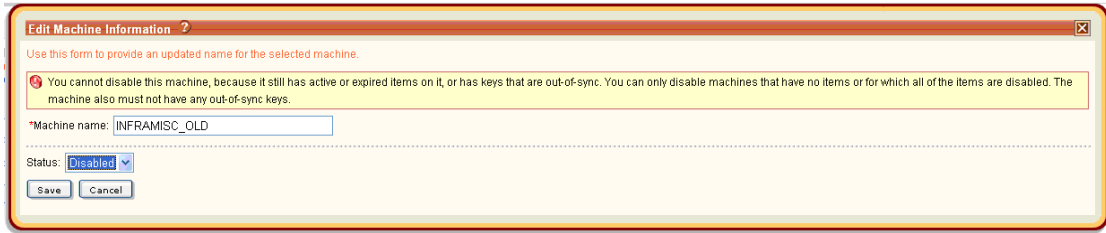


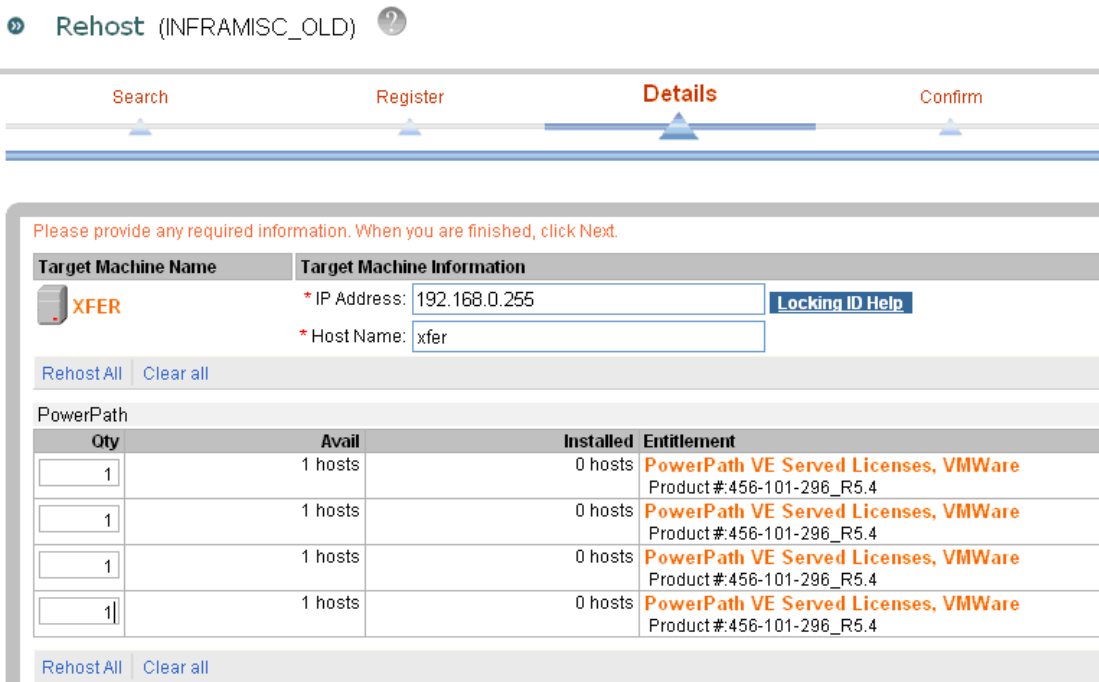
Figure 10 – Success

But you cannot disable a host if it still has active licences. Note that this activity is a lot simpler if you change both the hostname and IP address of the ELM. Changing only one or the other requires the addition of a “transfer” host.



**Figure 11 – Machine Status Change Error**

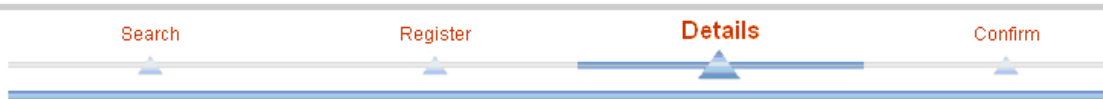
The Modified Capacity will then show as the correct amount. Create a new license host. Call it XFER if you like. Then assign the licences to the transfer host.




**Figure 12 – Transfer Host**

Once the licenses are assigned to the transfer host, you can disable or delete the old ELM host, and create a new ELM server with the correct hostname and IP address.

» Rehost (INFRAMISC\_OLD) ?



Please provide any required information. When you are finished, click Next.

Target Machine Name	Target Machine Information
 <b>INFRAMISC</b>	* IP Address: <input type="text" value="10.194.0.15"/> <a href="#">Locking ID Help</a>
	* Host Name: <input type="text" value="inframisc"/>

Rehost All Clear all

PowerPath			
Qty	Avail	Installed	Entitlement
<input type="text" value="1"/>	1 hosts	0 hosts	PowerPath VE Served Licenses, VMWare Product#:456-101-296_R5.4
<input type="text" value="1"/>	1 hosts	0 hosts	PowerPath VE Served Licenses, VMWare Product#:456-101-296_R5.4
<input type="text" value="1"/>	1 hosts	0 hosts	PowerPath VE Served Licenses, VMWare Product#:456-101-296_R5.4
<input type="text" value="1"/>	1 hosts	0 hosts	PowerPath VE Served Licenses, VMWare Product#:456-101-296_R5.4

Rehost All Clear all

Figure 13 – New Host – Modify Quantity