

penguinpunk.net
upgrading FLARE on an EMC CLARiiON CX4 – part 1
revision 0.1

synopsis

The following is a simple document providing visual guidance on the process required upgrade the FLARE code on an EMC CLARiiON CX4 array.

table of contents

introduction 3
process 4
part 1 - installing unisphere service manager..... 4

table of figures

Figure 1 - Launch USM executable file 4
Figure 2 - Prepare to install 4
Figure 3 - Upgrade option..... 5
Figure 4 - Introduction..... 5
Figure 5 - License Agreement 6
Figure 6 - Accept License Agreement 6
Figure 7 - Choose Repository Location 7
Figure 8 - Pre-Installation Summary 7
Figure 9 - Uninstalling older version 8
Figure 10 - Installing Java Runtime Environment..... 8
Figure 11 - Installing Merge Module 9
Figure 12 - Installing Uninstall Option..... 9
Figure 13 - Installation Complete..... 10
Figure 14 - Launching Unisphere Service Manager 10
Figure 15 - Login..... 11
Figure 16 - Enter hostname or IP address 11
Figure 17 - Enter hostname..... 12
Figure 18 - Enter credentials 12
Figure 19 - Enter credentials, click login..... 13

introduction

The following is part 1 in a series of simple documents aimed at providing visual guidance on the process required upgrade the FLARE code on an EMC CLARiiON CX4 array. These documents assume that a version of FLARE 30 is already installed on the array, although the steps for FLARE 29 and below are not significantly different.

These documents assume that you have access to EMC's Unisphere Service Manager (USM) on a Windows platform, and that you have downloaded copies of the FLARE code, Recovery Image and Utility Partition Image.

These documents are not intended as a replacement for EMC's official procedure guides, but rather should be used in conjunction with documentation available from Powerlink (<http://powerlink.emc.com>). You should also refer to <http://www.emc.com/cx4support> for customized documentation. The normal warnings and caveats apply when upgrading firmware on an array, particularly if it has data on it that is valuable to you. Backup first, and don't come crying to me if you break something.

process

There are 4 basic steps to upgrading FLARE code on a CX4 array:

- Installing / upgrading Unisphere Service Manager (covered in part 1);
- Preparing for Installation (covered in part 2)
- Upgrading FLARE code (covered in part 3);
- Upgrading the Recovery Image (covered in part 4); and
- Upgrading the Utility Partition (covered in part 4).

part 1 - installing unisphere service manager

Unlike the olden days / last decade, when there was a software installation wizard that could be launched directly from the CLARiiON, there is now a requirement to use EMC’s Unisphere Service Manager (USM). This is a client-side application that can be used to perform basic maintenance tasks, including FLARE code upgrades. Note that this application was known as Navisphere Service Taskbar (NST) prior to the release of FLARE Release 30. The first step is to install / upgrade USM on the host that will be used to upgrade the array.

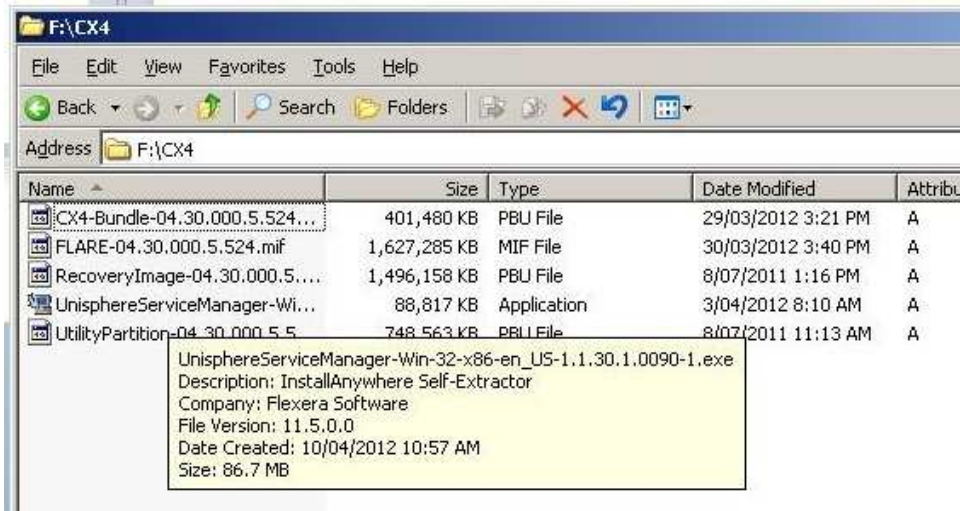


Figure 1 - Launch USM executable file



Figure 2 - Prepare to install

If an earlier version of USM is detected by the installer it will give you the option to upgrade. I recommend you click Yes.

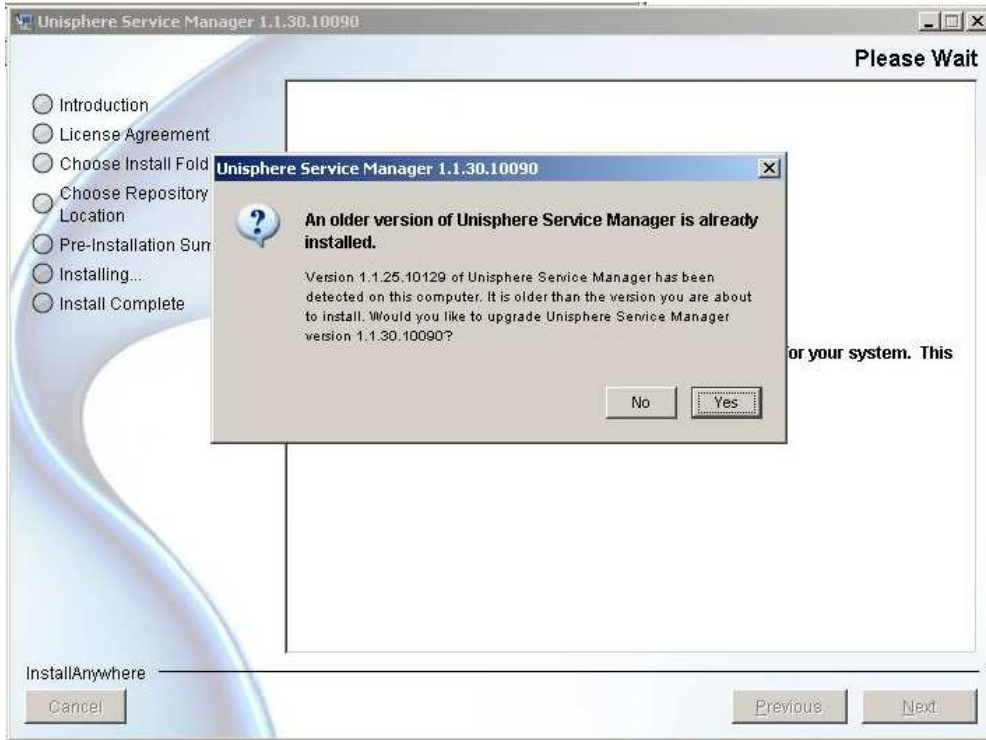


Figure 3 - Upgrade option

The introduction provides the standard warnings about quitting other programs before you begin, and so forth.

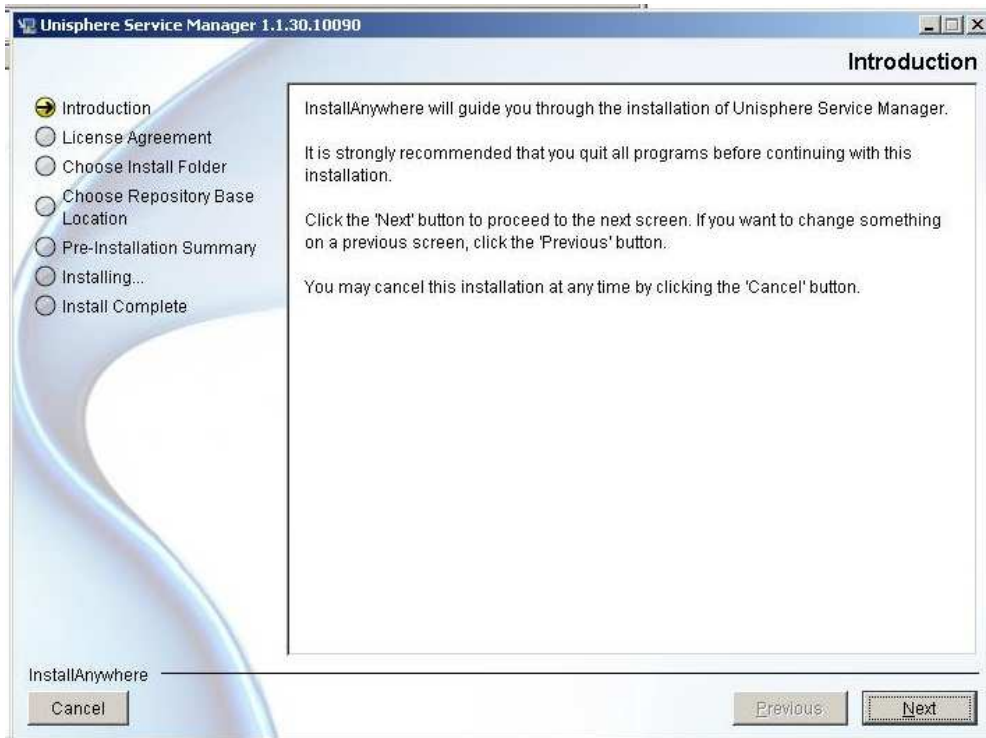


Figure 4 - Introduction

I'm sure you'll read the License Agreement.

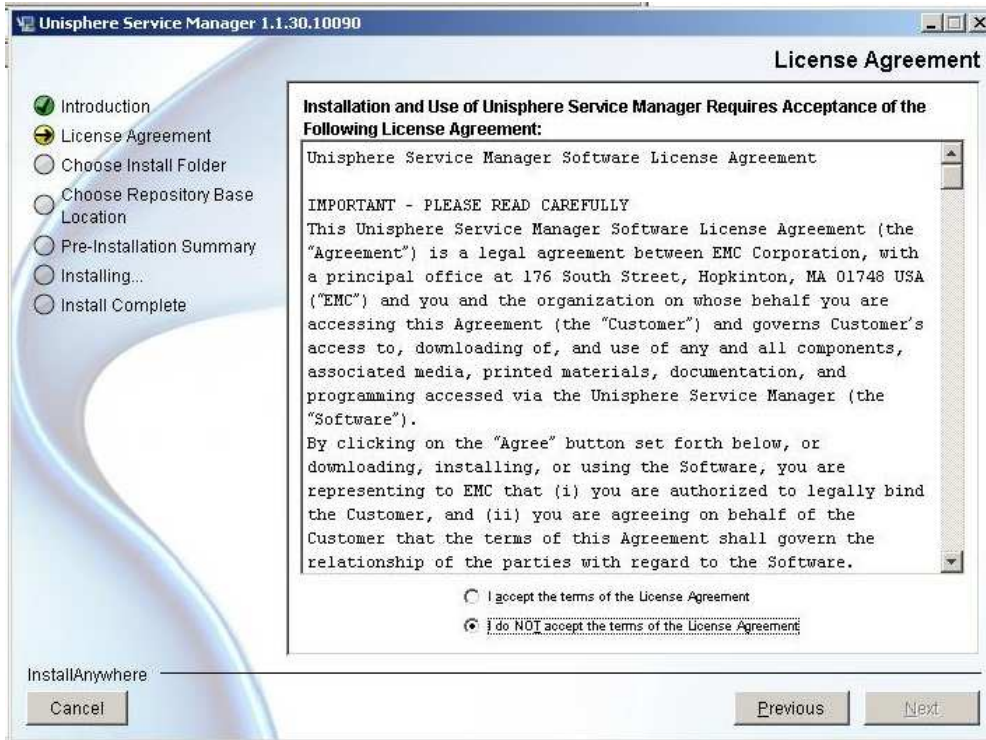


Figure 5 - License Agreement

Once you've read the License Agreement, select "I accept the terms of the License Agreement". Once you've done this, the Next button becomes available. Click Next to continue.

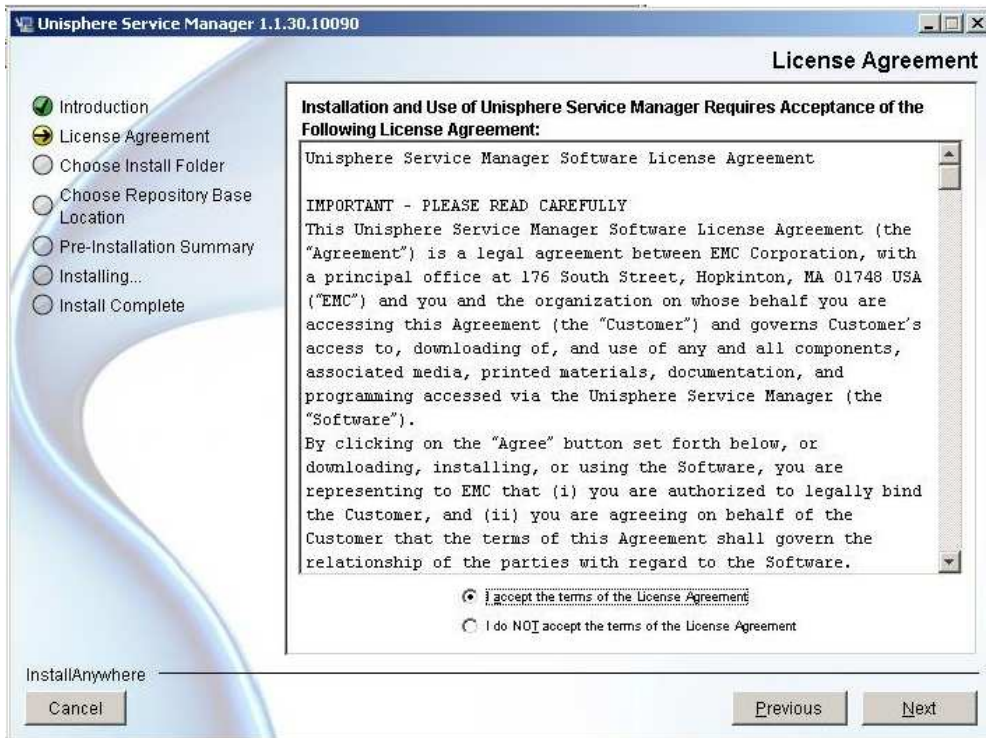


Figure 6 - Accept License Agreement

The next step involves the selection of the repository location. This is where USM will store diagnostic data (SP Collects) and things such as FLARE code downloaded from EMC. Unless you have a particular requirement to store it in a different location, stick with the defaults.

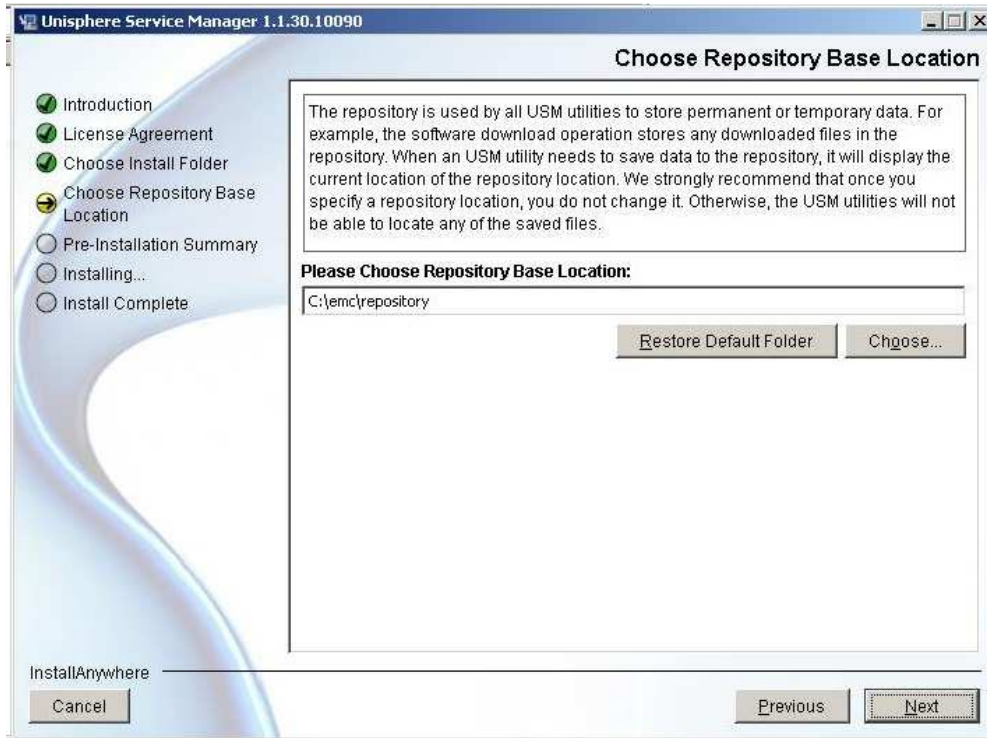


Figure 7 - Choose Repository Location

Now it's time to review what's going to happen.

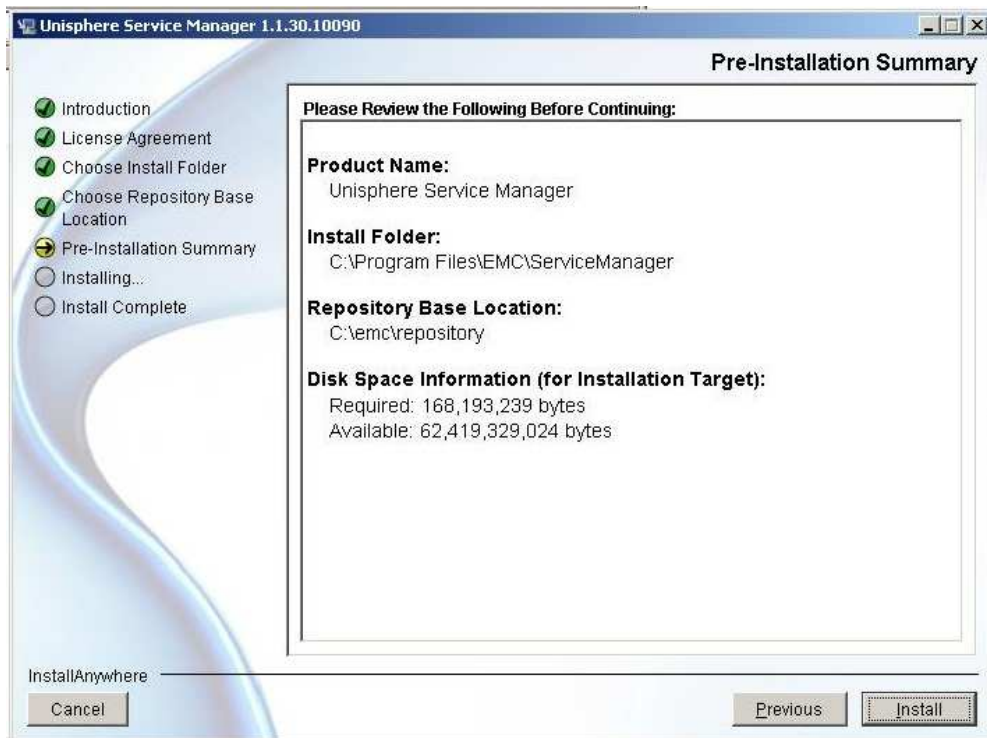


Figure 8 - Pre-Installation Summary

Once you've clicked on Install, the old version of USM is uninstalled.

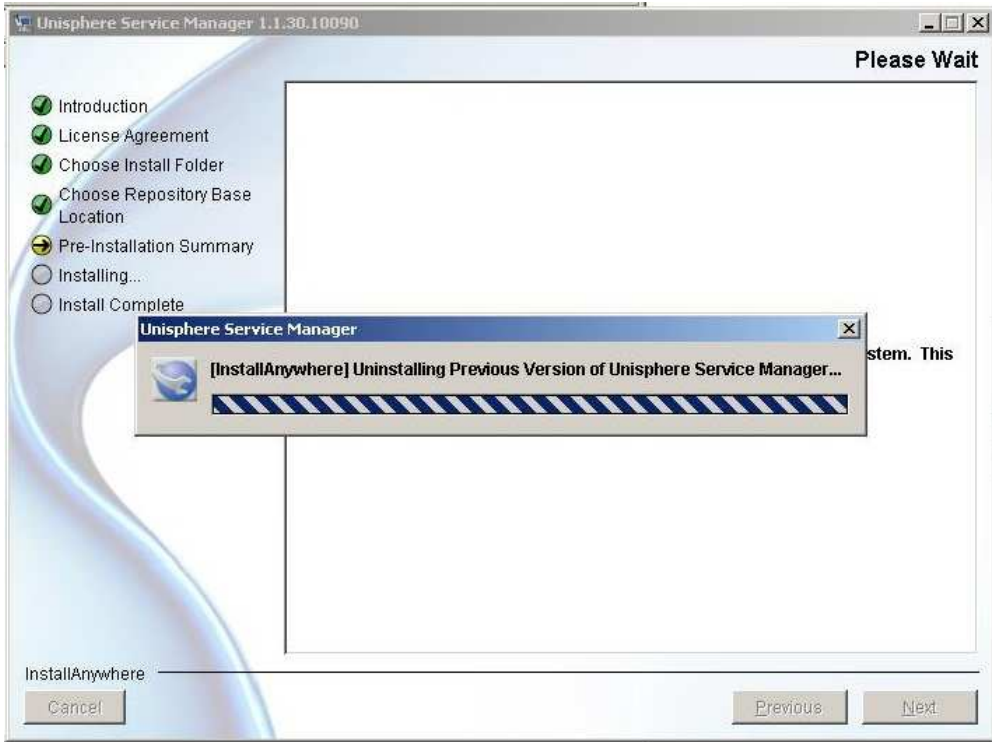


Figure 9 - Uninstalling older version

Sure, why not another version of the JRE?

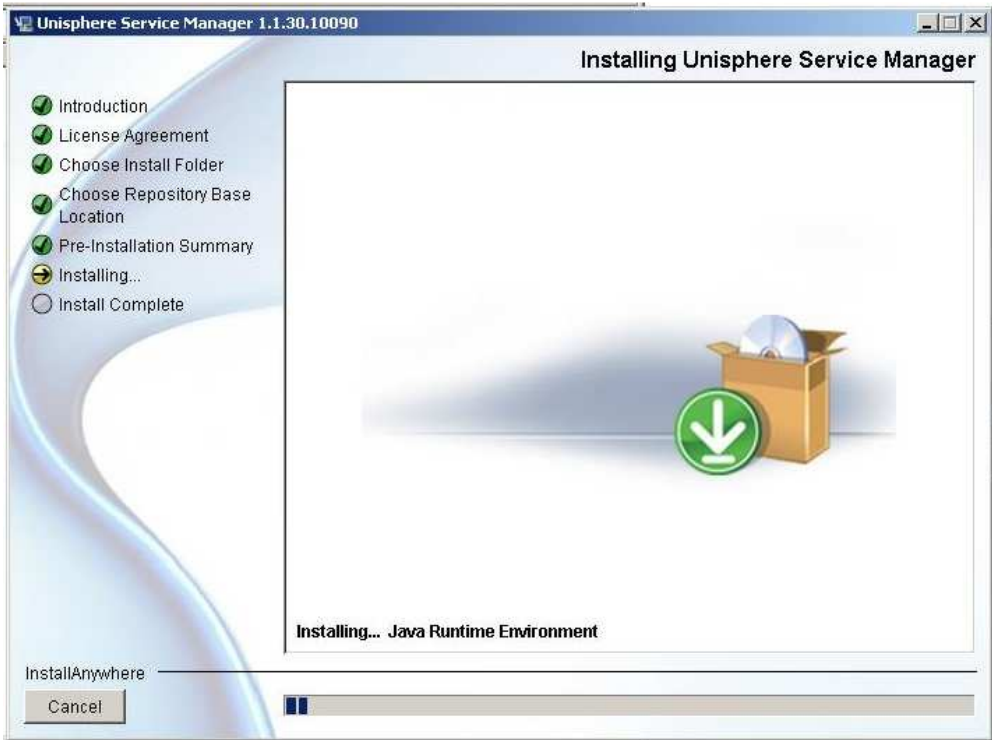


Figure 10 - Installing Java Runtime Environment

And more progress.



Figure 11 - Installing Merge Module

And more progress, including the installation of the uninstall routine.

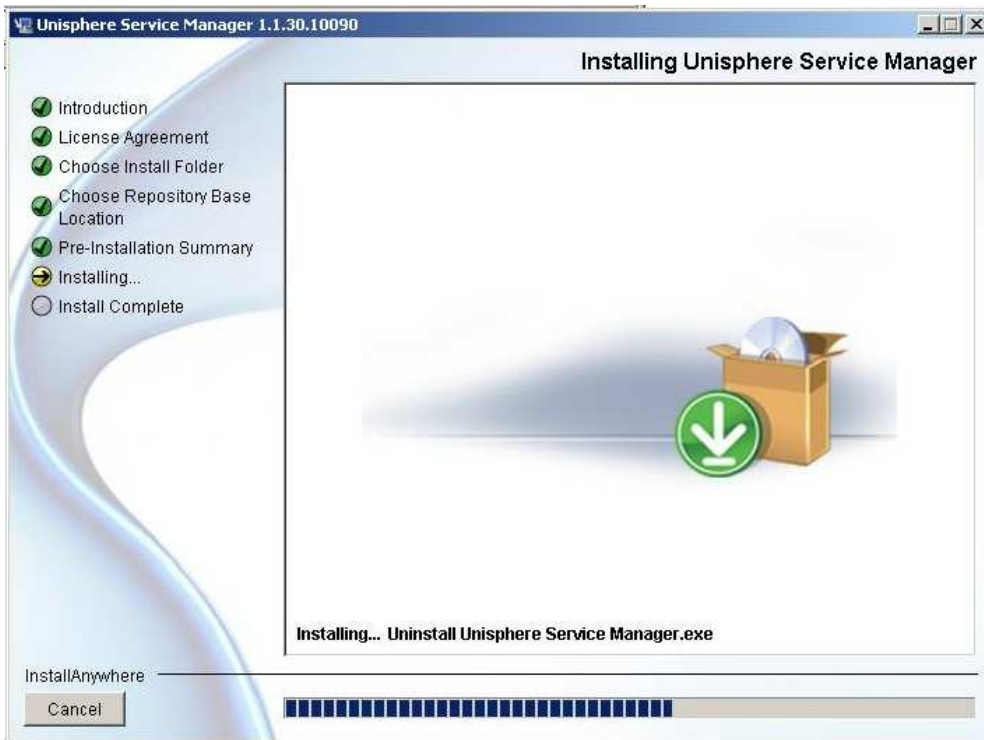


Figure 12 - Installing Uninstall Option

And we're done. If you leave "Launch Unisphere Service Manager" ticked and click Done, USM will then launch.

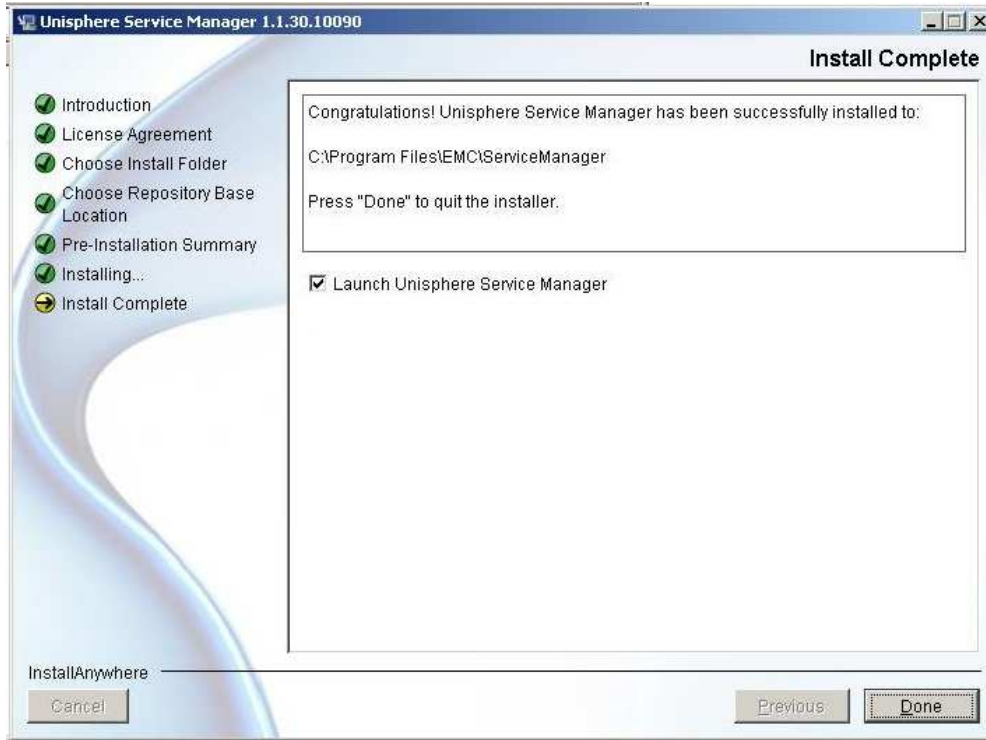


Figure 13 - Installation Complete

If for some reason you didn't want to do that, USM can be launched from Start – All Programs – EMC – Unisphere – Unisphere Service Manager – Unisphere Service Manager.



Figure 14 - Launching Unisphere Service Manager

Once USM has launched you'll be presented with the default Login screen. Click on the Login button.

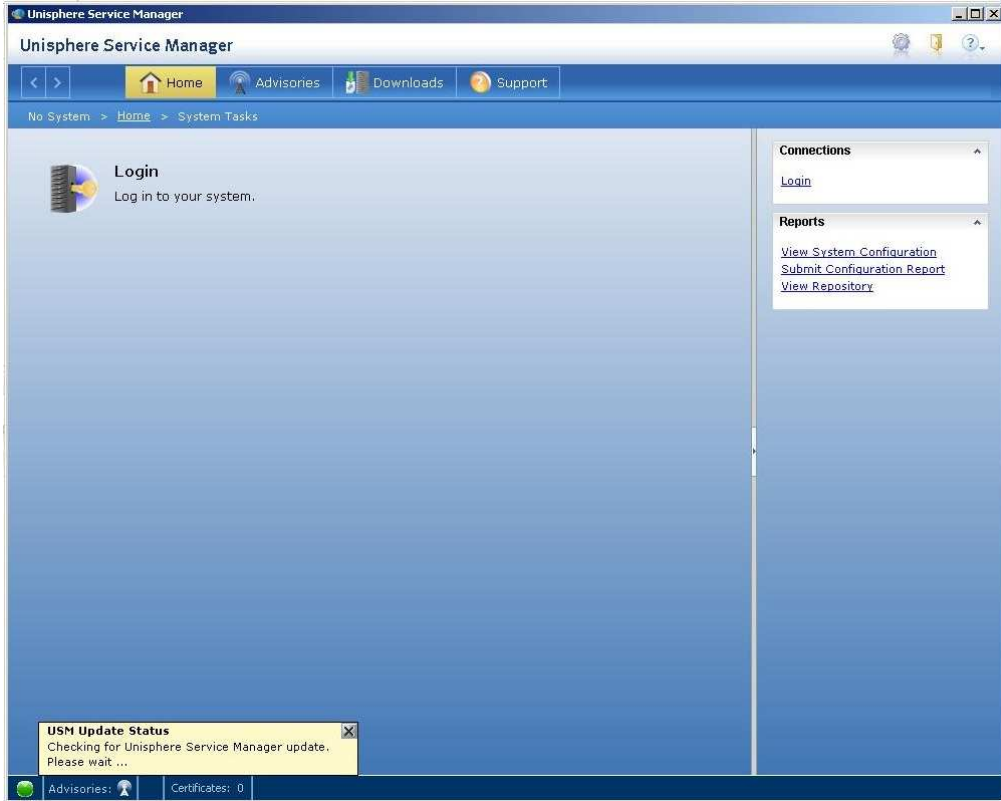


Figure 15 - Login

You will then be presented with a dialog box requesting details of the array you wish to connect to. This can be a hostname or IP address.

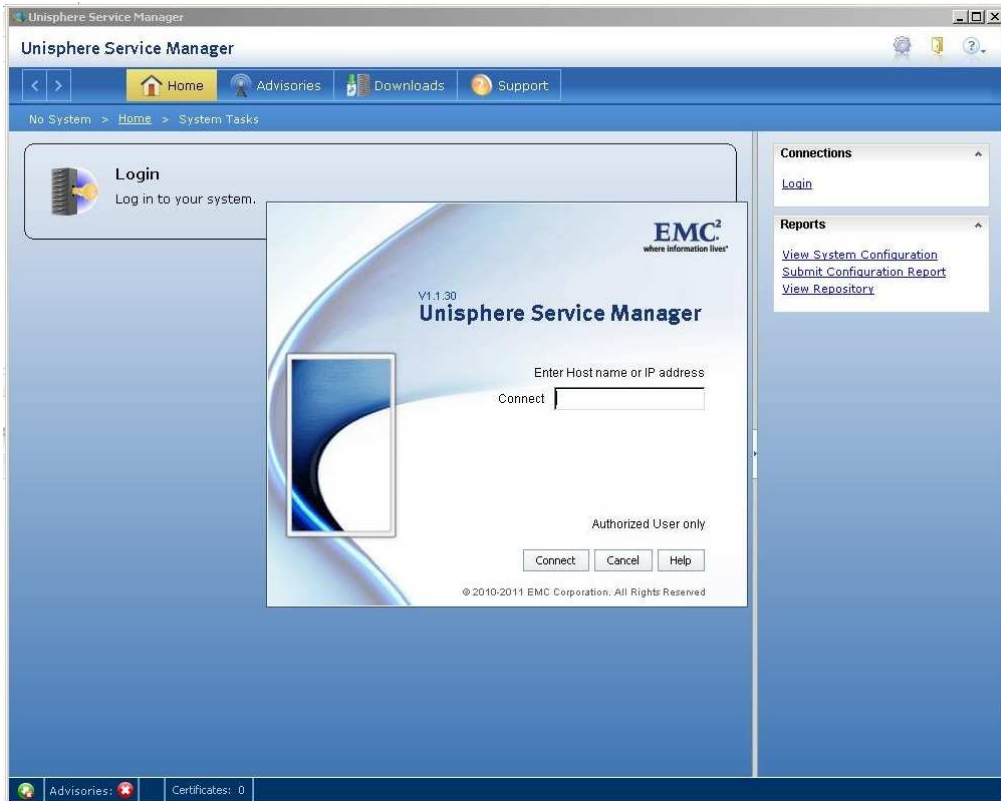


Figure 16 - Enter hostname or IP address

Once you enter a suitable hostname or IP address, click Connect to continue.

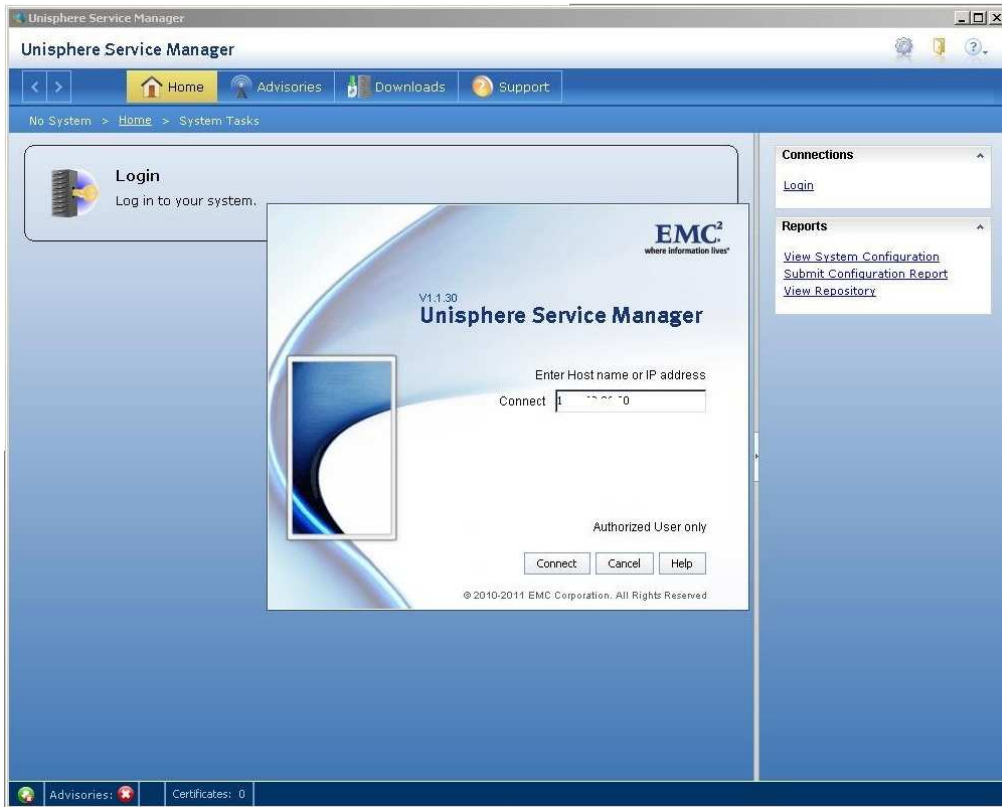


Figure 17 - Enter hostname

At this point you'll then be asked for credentials. You'll also have the option to select whether you wish to use LDAP authentication, and whether the account you're using is Local or Global.

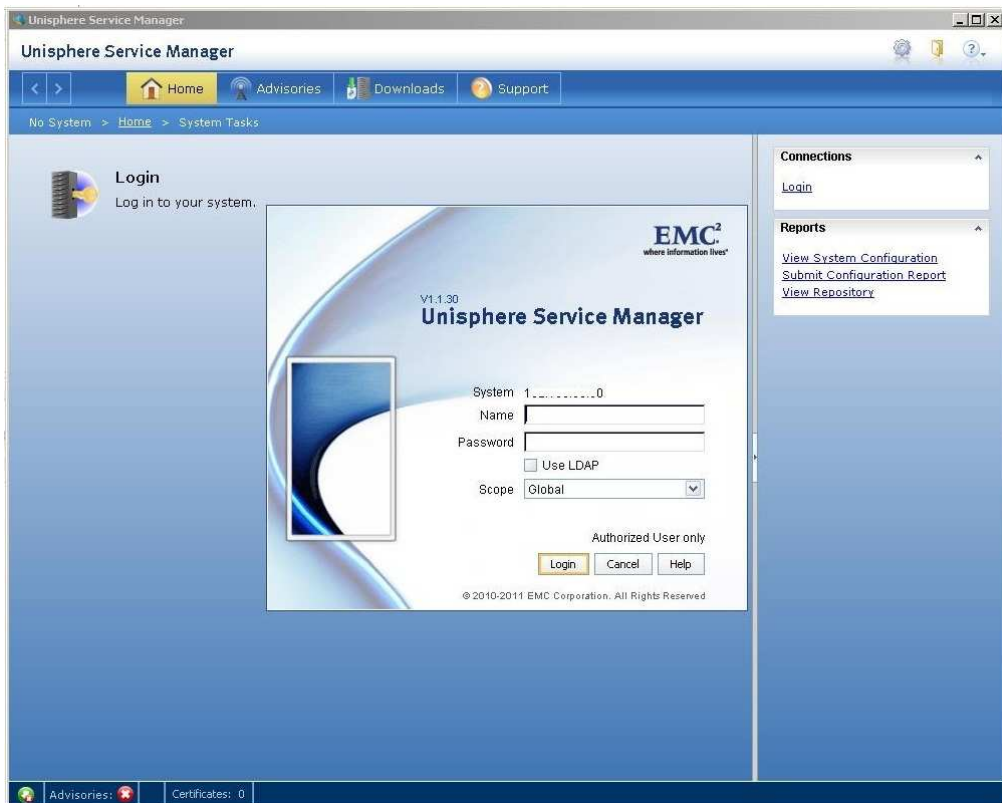


Figure 18 - Enter credentials

In this example I'm using a global, generic account on a test lab array. Once you've entered the appropriate credentials, click Login and USM will login to the array.

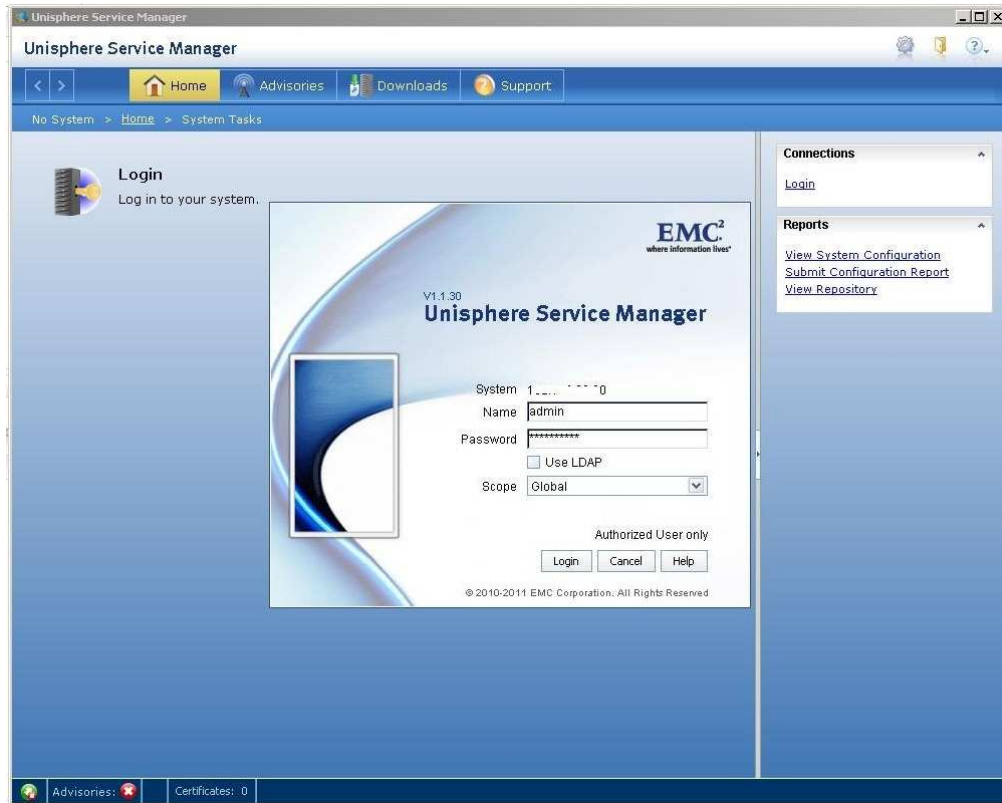


Figure 19 - Enter credentials, click login

At this stage you're ready to move on to Part 2 – Preparing for Installation.